

## Term Contract No. 420B

STATE OF NORTH CAROLINA, DEPARTMENT OF ADMINISTRATION		
DIVISION OF PURCHASE AND CONTRACT		
116 West Jones Street, Raleigh, NC 27603-8002		
<b>Term Contract</b>	<b>420B</b>	<b>Furniture, Classroom, Metal</b>
<b>Effective Dates</b>	December 1, 2008 through November 30, 2012	
<b>Bid Number</b>	801277	
<b>Administrator</b>	Dorothy Shaw	
<b>Phone</b>	(919) 807-4535	
<b>Fax</b>	(919) 807-4510	
<b>E-Mail</b>	<a href="mailto:dorothy.shaw@doa.nc.gov">dorothy.shaw@doa.nc.gov</a>	
<b>Last Updated</b>	November 30, 2011	

### 1. General Information

This contract is intended to cover the State's normal requirements of Metal Classroom Furniture for use by all State agencies, departments, institutions, universities, community colleges, public school units (except those exempted by statute), and certain non-state agencies for a period of approximately two years from the date of award of this contract.

Some items may not be shipped fully assembled and installation will be required. Upon placing orders, agencies should inquire if the items ordered will need installation. If the ordering agency desires that the contractor provide the installation, the agency should obtain installation pricing information prior to placing the order.

Each item delivered under this contract shall be identified with either a "stick-on" or permanent label identifying the manufacturers' name and production date.

Before disposing of broken items or items in need of repair, the using agency should contact the vendor to obtain warranty information.

All furniture offered shall be in compliance the North Carolina Specifications (latest revision): 7110-9, 7110-10, 7110-11, 7110-12 and 7110-13 as applicable. These specifications reside at our web site: [www.ncpandc.gov](http://www.ncpandc.gov)

Refer to the Recycled Content (Section 11a) for information concerning vendor responses of recycled contents of their products and packaging.

### 2. Scope of Contract

The scope of this contract is limited to Metal Classroom Furniture (Computer Classroom Tables, General Purpose Classroom Tables, Metal Teacher Desks, Metal Pupil Tables, Metal Classroom Chair Desks, Metal General Purpose Chairs). This contract is not intended to include all varieties of the commodity as indicated by the title of the list, or which may be commercially available, but is intended to cover only those commonly used by all State agencies, departments, institutions, universities, community colleges, public schools units (except those exempted by statute), and certain non-state agencies. Folding Tables and Wood Furniture are not included in this contract.

### 3. Taxes

Prices or Discounts shown herein do not include any North Carolina sales or use taxes.

### 4. Abnormal Quantities

Any agency requirement that exceeds \$100,000.00 must be forwarded to the Division of Purchase and Contract for processing. The Division, at its sole discretion, may process any such requirement in one of the following ways:

1. Purchase may be authorized at the current level of pricing with the current contract vendor(s)
2. Additional discounts from the current level of pricing may be negotiated with the current contract vendor(s)
3. A separate Invitation for Bids may be issued for the requirement

#### 4. Minimum Orders

This contract will be for a minimum order of \$500.00 for any single order. Agencies are authorized to purchase from best available sources on orders less than this minimum order value. This provision shall not be used by an agency to circumvent the intent of the contract. If an agency elects to place an order for less than the minimum order value, then transportation charges will be prepaid and added to the invoice.

#### 5. Placement of Orders

Orders will be placed throughout the contract period on an as-needed basis for the quantity required at the time, and will be issued directly to the respective contractor(s) or their designated suppliers. Contract changes, if any, over the life of the contract are implemented by contract addenda released by the Contract Administrator to the contractor. If the contractor is accepting orders and/or delivering through other parties, for example a manufacturer accepting orders and delivering through a dealer network or dealers receiving orders through a network of other dealers, then it is the responsibility of the contractor to apprise such parties of all such contract addenda.

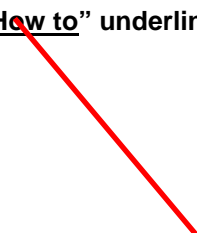
#### Order Placement Via E-Procurement (Catalog Items)

- a. Click on the following link: [E-Procurement Users](#)
- b. When placing an order in the e-procurement system, the very first thing to do is to go to the catalog tab and select options. After you have selected options, select contract ID. In the contract ID space type in the contract ID number, 420B.
- c. Please make sure the keywords space is blank and the contract ID is typed in the contract ID section.
- d. After selecting the contract ID and to narrow the search to a particular manufacturer select the manufacturer from the drop down
- e. When the item to be ordered has been located complete the requisition and issue the purchase order.

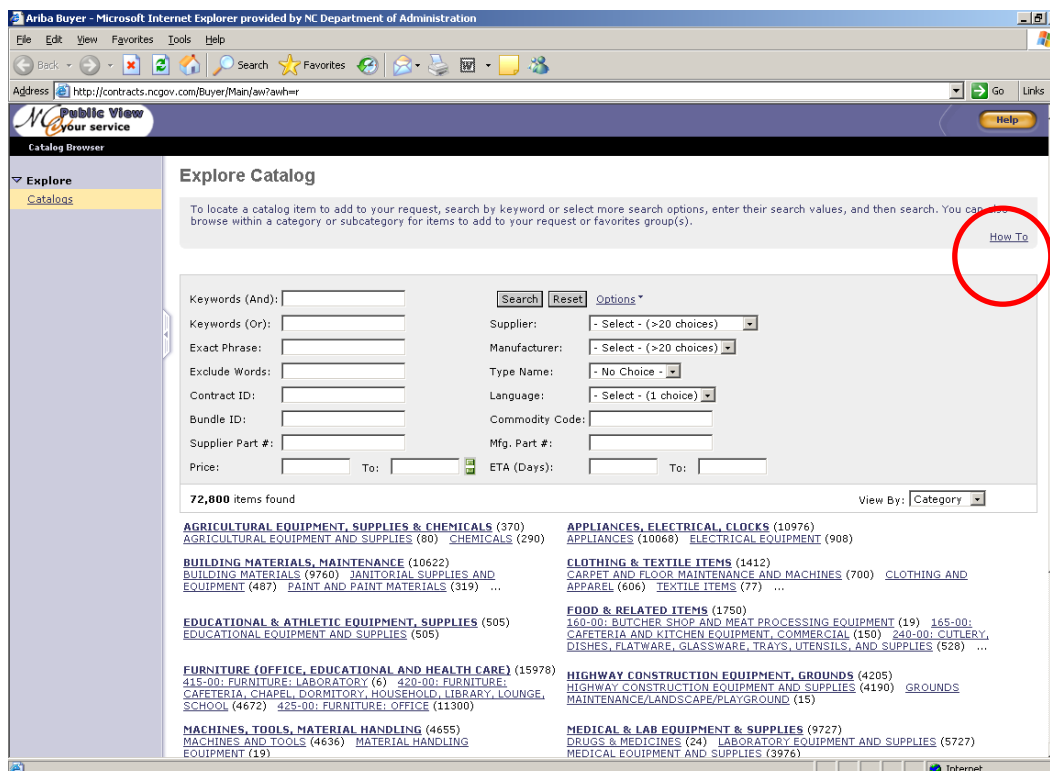
#### Non E-Procurement Users

The E-Procurement Public View will be the only place for Non E-Procurement Users to view the item/pricing information.

- a. Click on the following link: [E-Procurement Public View](#)
- b. For online assistance regarding item searching; click on the “How to” underlined link located near the upper-right hand corner.



## Term Contract No. 420B



## 6. Delivery

The contractor(s) will complete delivery as listed below:

Blankenship Associates, Inc.	5-8 Weeks
Corilam Fabricating Company, Inc.	45 Days
Custom Educational Furniture	21 Days
The HON Company	30-45 Days
Interior Systems, Inc. (CDF)	30 Days
Krueger (KI)	30 Days
Perfection Equipment Company, Inc. (Columbia and Allied Plastics)	30 Days
RDS	90 Days
Royal Seating	4-6 Weeks
Scholar Craft Products, Inc.	10-30 Days
Spectrum Industries	10-28 ARO, 28-56 Custom
Smith System Manufacturing	30 Days
Virco Inc.	10-45 Days

The contractor(s) will complete delivery

In the event the delivery is not received within the contract delivery period, the contractor may be held in default in accordance with paragraph 1, DEFAULT AND PERFORMANCE BOND in the North Carolina General Contract Terms and Conditions, and the state may procure the articles or services from other sources and hold the contractor responsible for excess cost occasioned thereby.

## 7. Transportation Charges

All goods shall be delivered FOB DESTINATION when the "order value" is \$500.00 or more, when shipped to a single destination. Orders to a single destination that total less than this "order value" should be shipped prepaid, with

**Term Contract No. 420B**

transportation charges added to the invoice as a separate item. Transportation charges invoiced for orders equal to or more than this "order value" may be cause for removal of the contractor from the contact.

**NOTE:** If the contractor makes partial shipments of an order equal to or more than this "order value" to one destination, all shipments of the order shall be sent FOB DESTINATION with NO additional transportation charges added.

**Note!** All shipments should be inspected for damage immediately upon receipt.

**8. Product Classification and Item Pricing Information**

This contract consists of nine (9) line items as listed below:

ITEM NUMBER	DESCRIPTION
Line Item 9.1.1.	CLASSROOM SEATING – Side Chairs, Chair/Desks, Combos, Pupil Tables – Metal Frame with Separate Seat and Back (Thermoset Seat & Back)
Line Item 9.1.2.	CLASSROOM SEATING – Side Chairs, Chair/Desks, Combos, Pupil Tables – Metal Frame with Integral Seat and Back (Thermoplastic Seat & Back)
Line Item 9.1.3.	TABLES, GENERAL PURPOSE, CLASSROOM, METAL – Leg Base, Adjustable Height
Line Item 9.1.4.	DESK, TEACHER, METAL
Line Item 9.1.5.	TABLES, COMPUTER, CLASSROOM, Double Pedestal, Fixed Height, With Grommets in Top
Line Item 9.1.6.	TABLES, COMPUTER, CLASSROOM, Double Pedestal, Fixed Height, With Flipper Lid
Line Item 9.1.7.	TABLES, COMPUTER, CLASSROOM, Apron & Corner Braced, with Grommets in Top
Line Item 9.1.8.	TABLES, COMPUTER, CLASSROOM, Apron & Corner Braced, with Flipper Lid
Line Item 9.1.9.	TABLES, COMPUTER, CLASSROOM, Panel End, Fixed Height, With Flipper Lid/Grommets

It will be mandatory for agencies to request catalogs and price lists from contractor(s) before placing orders.

Below are examples of styles for Line Items 9.1.1. and 9.1.2. The number beside each chair corresponds with the styles as listed on Specification 7110-9. Listed for each item is the contractor name, series/style awarded, catalog/price list and discount from price list.

**Side Chair Without Arms, SEPARATE Seat and Back**



Thermoplastic seat & back  
 Thermoset seat & back, 5/8" thickness  
 Braces connecting legs  
 Thermoset seat & back, 3/8" thickness



Leg base, Thermoset seat & back, 5/8" thickness  
 Leg braces, Thermoset seat & back 5/8" thickness  
 With book rack, Thermoset seat & back 5/8" thickness  
 With book basket, Thermoset seat & back 5/8" thick



IB1, IB2

SLED BASE, thermoplastic seat & back  
SLED BASE, thermoset seat & back, 5/8" thickness



Teacher Chair: IC1, IC2, ICH2

With casters, other than "H", Thermoplastic seat & back  
With casters, other than "H", Thermoset seat & back, 5/8" thickness  
With "H" frame

**Side Chair Without Arms, INTEGRAL Seat and Back**



IIA



IIB



Teacher Chair IIC

Leg base  
Wide bucket shell (Seat & Back)  
Sled Base  
Wide bucket shell (Seat & Back)  
With casters, other than "H", leg base

**Tablet Chair/Desks, SEPARATE Thermoset Seat and Back**



ID2

Large writing surface (300 sq. in. Min.), seat & back 5/8" thickness  
Seat & back 3/8" thickness  
"H" frame, large writing surface (300 sq. in. Min.) seat & back 5/8" thickness

**Tablet Chair/Desks, INTEGRAL Thermoplastic Seat and Back**



IID

Frame other than "H", (Large writing surface 300 sq. in. min.)

**Combo, Study Desk/Chair Combination, SEPARATE Seat and Back**



IE1



IF2

Thermoplastic seat & back with arm brace  
Thermoset seat & back 5/8" thickness  
Thermoset seat & back 3/8" thickness  
Thermoset seat & back 5/8" thickness without arm brace (double entry)

**Combo, Study Desk/Chair Combination, INTEGRAL Seat and Back**



IIE

Double Entry Combo, without arm brace

**9.A. Classroom Seating (Side Chairs, Chair/Desks, Combos, Pupil Tables), Metal Frame with SEPARATE Seat and Back (Thermoset Seat and Back)**

**Side Chairs** available on this contract include standard A frame, H frame, Sled Base and Mobile Teacher Chairs  
 Seat back types are integral (one piece) and separate (two piece)  
 Material of seat and back is hard plastic (thermoset)  
 Specify the seat height (inches)

**Chair Desks** available on this contract include standard A frame, H frame, Sled Base with large and small writing surfaces  
 Seat back types are integral (one piece) and separate (two piece)  
 Tablet Chair/Desks, with leg base tubular steel frame, with SEPARATE Thermoset Seat & Back  
 Material of seat and back is hard plastic (thermoset)  
 Writing top available with hard plastic (thermoset) or particle board core with a high pressure laminate (HPL) surface  
 Specify seat height (inches)

**Combos** available on this contract (Separate Seat & Back) include a standard leg base frame, with a single side entry or dual side entry  
 Seat back types are integral (one piece) and separate (two piece)  
 Study Desk/Chair Combination (Combo) with leg base tubular steel frame with SEPARATE Seat & Back  
 Material of seat and back is hard plastic (thermoset)  
 Writing top is available with hard plastic (thermoset) or particle board core with a high pressure laminate surface  
 Specify the seat height (inches)

**Pupil Tables** available on this contract include closed containment models with Fixed and Adjustable Leg and Pedestal Base Units plus Open Containment Models with Fixed and Adjustable Leg Base Units  
 Material of the writing top is either hard plastic (thermoset) or HPL

CONTRACTOR / MFGR.	SERIES	CATALOG	DISCOUNT
Interior Systems (CDF)	Series 1000, 2000, 4000, 5000, 9000	Retail Price List Sheets dated June 1, 2008 Illustrated Printed Sheets	45%
KI (Ivy League)	Ivy League Classroom Furniture Series TC, 10, 20, 30, 40, 56, 58 61, 66, 85, 90, Series TC, 1000, 1060/CH, 1020/CH	Classroom Collections and Classroom Tables & Chairs Price Lists dated January 3, 2011	46%
Perfection Equipment Co. (Columbia)	1187, 114/1140/152 Series, 112/113/162 Series Chairs 132/139/133 Series, 377, 344 111, 872, 812, 512, 1187, 152WC 373, 1200, 525/526/527/528, 524, 3/5/7 Series Pupil Tables, 313, 311	Columbia March 1, 2011 Price List	59%
Scholar Craft Products	180 Series, 150, 480,580 Series 450, 550 Series, 130 Series, 650, 680, 830, 850, Series SC2400, SC2600, SC2900, SC7800, 880 Series	Scholar Craft Retail Price List dated April 1, 2008 Scholar Craft School Furniture Catalog	45%
Virco	37 & 7900 Series 3785MBB Series & 785MBB Series 3870 MBB Series, 87 Series 372 and 723 Series', 3050 380 and 390 Series (Hard Plastic) 3200 & 3300 Series (Hard Plastic)	Virco Equipment for Educators 2008 FOB Factory List Prices Effective January 1, 2008	59%

**Term Contract No. 420B**

	4100 Chairs, 2945 Chair,		
	3700BR, 3400 Series, 3050		
	9400 Series		

**9.B. Classroom Seating (Side Chairs, Chair/Desks, Combos, Pupil Tables), Metal Frame with INTEGRAL Seat and Back (Thermoplastic Seat and Back)**

**Side Chairs** available on this contract include standard A frame, H frame, Sled Base and Mobile Teacher Chairs  
 Seat back types are integral (one piece) and separate (two piece)  
 Material of seat and back is soft plastic (thermoplastic)  
 Specify the seat height (inches)

**Chair Desks** available on this contract include standard A frame, H frame, Sled Base with large and small writing surfaces  
 Seat back types are integral (one piece) and separate (two piece)  
 Tablet Chair/Desks, with leg base tubular steel frame, with INTEGRAL Thermoplastic Seat & Back  
 Material of seat and back is soft plastic (thermoplastic)  
 Writing Top is available with hard plastic (thermoset) or particle board core with a high pressure laminate (HPL) surface  
 Specify seat height (inches)

**Combos** available on this contract (Integral Seat & Back) include a standard leg base frame, with a single side entry or dual side entry  
 Seat back types are integral (one piece) and separate (two-piece)  
 Study Desk/Chair Combination (Combo) with leg base tubular steel frame with INTEGRAL Seat & Back  
 Material of seat and back is soft plastic (thermoplastic)  
 Writing top is available with hard plastic (thermoset) or particle board core with a high pressure laminate surface  
 Specify the seat height (inches)

**Pupil Tables** available on this contract include closed containment models with Fixed and Adjustable Leg and Pedestal Base Units plus Open Containment Models with Fixed and Adjustable Leg Base Units  
 Material of the writing top is either hard plastic (thermoset) or HPL

CONTRACTOR / MFGR.	SERIES	CATALOG/PRICE LIST	DISCOUNT
Perfection Equipment Co. (Columbia)	126, 127 Series Chairs 5307, 8817, 5327	Columbia March 1, 2011 Price List	59%
RDS	Panto Swing 3000 Series Only	VS Product Information, US Price List 2008, VS School Furnishing Catalog	23%
Royal Seating	1101 Series Only	2009 Royal Seating Suggested Landed, Retail Distributor Price List Effective 1/1/09	50%
Scholar Craft Products	120 Series, 420 Series 620/820/830 Series, 127-C, 2400 130 and 140 Series, 630 Series 430 Series, 2900, 7800, 2600 Series	Scholar Craft Retail Price List dated April 1, 2008 Scholar Craft School Furniture Catalog	45%
Smith System Manufacturing	2000 Series Only, 02000, 02001, 02002, 02003, 02004, 02012	Smith System Zone 3 Price Book 2009	48.25%
Virco	37 & 7900 Series 3785MBB Series & 785MBB Series 3870 MBB Series, 87 Series 372 and 723 Series	Virco Equipment for Educators 2008 FOB Factory List Prices Effective January 1, 2008	50%

**Term Contract No. 420B**

	All 9000 Series Chairs/Chair Desks		
	9600 Series, 9700BR, 1Q		
	Chairs/Chair Desks 2600 Series		
	9800 BR, 2600 Series Chairs/		
	Combos		

**9.C. Tables, General Purpose, Classroom, Metal**

General Purpose Metal Frame Tables  
 Fixed & Adjustable height Leg Base Models – Rectangular, Round, Square, Trapezoidal, Kidney  
 Apron & Corner Braced, Fixed Height – Rectangular, Round, Square Top  
 Double Pedestal, Adjustable Height – Rectangular Top  
 Single Pedestal, Fixed Height – Rectangular, Round, Square  
 Also available are single, double and triple book boxes plus a tote tray and runners. All of these attach to the underside of the table top.

<b>CONTRACTOR / MFGR.</b>	<b>SERIES</b>	<b>CATALOG/PRICE LIST</b>	<b>DISCOUNT</b>
KI (Krueger)	IW41X, IWTAXX, IWSXX, IWRXX, IWLXX, IWSXX, IWRXX, IWLXX	Classroom Collections and Classroom Tables & Chairs Price Lists dated January 3, 2011	46%
Perfection Equipment Company (Columbia)	5307, 8817, 5327, 126, 127 Series Chairs	Columbia March 1, 2011 Price List	59%
Perfection Equipment Company (Allied Plastics)	F500 Series, 8000 Series 8000 Series	Allied Plastics Co. Retail Price List Effective January 1, 2009	40%
Scholar Craft Products	FS949 Series	Scholar Craft Retail Price List dated April 1, 2008 Scholar Craft School Furn. Catalog	45%
Virco	4000 Series, 6800 Series 8700 Series w/Accessories	Virco Equipment for Educators 2008 FOB Factory List Prices Effective January 1, 2008	58.5%

**9.D. Desk, Teacher, Metal**

Teacher Desks, Single and Double Pedestal Types  
 Locking file and box drawer in each pedestal  
 Center or Knee Drawer  
 Material of writing top high pressure plastic laminate  
 Frame & Leg support structure painted or chrome plated

CONTRACTOR / MFGR.	SERIES	CATALOG/PRICE LIST	DISCOUNT
Corilam Fabricating	Instructor Series	Corilam Catalog Price List 2009	45%
The HON Company	Mentor Series Steel Desks	HON Product Catalog Effective January 2011	57%
Virco	543 & 546 Series	Virco Equipment for Educators 2008 FOB Factory List Prices Effective January 1, 2008	63%

**9.E. Tables, Computer, Classroom, Double Pedestal, Fixed Height, with Grommets in Top**

Tables, Computer, Double Pedestal, Fixed Height w/Grommets in top – for Classroom and Laboratory  
 Grommets in top for routing cables and power cords through the table top to a cable management tray which is located under the forward edge of the table. These tables can be used as a stand alone, or in groups, with the cables running the entire length of the grommet inside the cable trays.

CONTRACTOR / MFGR.	SERIES	CATALOG/PRICE LIST	DISCOUNT
Corilam Fabricating	8000E Series	Corilam Catalog Price List 2009	45%
Custom Educational Furn.	ELS-ELD 4000 Series BAS Series	2008 Catalog & Pricing	60% 61.6%

**9.F. Tables, Computer, Classroom, Double Pedestal, Fixed Height, with Flipper Lid**

Tables, Computer, Double Pedestal, Fixed Height w/Flipper Lid – for Classroom and Laboratory  
 Table supported by two pedestals coupled together with a lateral beam member  
 Flipper lid in top for routing cables and power cords through the table top to a cable management tray which is located under the forward edge of the table. These tables can be used as a stand alone, or in groups, with the cables running the entire length of the group inside the cable trays.

CONTRACTOR / MFGR.	SERIES	CATALOG/PRICE LIST	DISCOUNT
Custom Educational	ELD-4000-XF Series	2008 Catalog & Pricing	60%
Spectrum	Flip Top Computer Desk Series	2009 Spectrum Industries Product Catalog & Price List	44%
Corilam Fabricating	8000-T Series	Corilam Catalog Price List 2009	45%

**9.G. Tables, Computer, Classroom, Apron & Corner Braced, with Grommets in Top**

Tables, Computer, Apron and Corner Braced with Grommets in Top – for Classroom and Laboratory  
 This table has four legs, with an apron across the front of the table and grommets in the top for routing cables and power cords through the table top to a cable management tray which is located under the forward edge of the table. This table can be used as a stand alone, or in a group, with the cables running the entire length of the group inside the cable trays. Adjustable legs are available for this table.

CONTRACTOR / MFGR.	SERIES	CATALOG/PRICE LIST	DISCOUNT
Achieva	SH0671-B Series w/Accessories	Achieva Retail Price List Effective January 1, 2007	46%
Blankenship Associates (Fleetwood)	24 Series (J-Trough)	Fleetwood Furniture 2009 Price List	37%

**9.H. Tables, Computer, Classroom, Apron & Corner Braced, with Flipper Lid**

Tables, Computer, Apron and Corner Braced with Flipper Lid – for Classroom and Laboratory  
 This table has four legs, with an apron across the front of the table and grommets in the top for routing cables and power cords through the table top to a cable management tray which is located under the forward edge of the table. These tables can be used as a stand alone, or in a group, with the cables running the entire length of the group inside the cable trays. Adjustable legs are available for this table.

CONTRACTOR / MFGR.	SERIES	CATALOG/PRICE LIST	DISCOUNT
Blankenship Associates (Fleetwood)	23 Series	Fleetwood Furniture 2009 Price List	40%
Corilam Fabricating	7000 Series w/Accessories 6000T Series	Corilam Catalog Price List 2009	45%

**9.I. Tables, Computer, Classroom, Panel End, Fixed Height, with Flipper Lid/Grommets**

Panel End, Fixed Height with Flipper Lid/Grommets – for Classroom and Laboratory  
 Panel End, Fixed Height, with Flipper Lid or Grommets in Top – This table has panel ends, as well as a panel front and grommets for routing cables and power cords from the table top to a cable management tray which is located under the forward edge of the table. This table can be used as stand alone, or in a group, with the cables running the entire length of the group inside the cable trays. The height is fixed.

CONTRACTOR / MFGR.	SERIES	CATALOG/PRICE LIST	DISCOUNT
Achieva	SH0161 Series w/Accessories	Achieva Retail Price List Effective January 1, 2007	46%
Corilam Fabricating	2000/3000/4000 Series w/Access.	Corilam Catalog Price List 2009	45%
Custom Educational	ELS-ELD 5000G Series	2008 Catalog & Pricing	60%

**10. Price Lists and Catalogs**

The successful contractor must furnish catalogs and descriptive literature to any agency within five (5) business days after request of the agency. Failure to comply with these requirements may subject the contractor to removal from the contract.

**11. Contractors**

All known minority, women and disabled owned businesses, as well as disabled business enterprises and nonprofit work centers for the blind and severely disabled, including dealers, will be identified with “Minority owned” “Woman owned”, “Disabled Owned”, “DBE” or “BSD” as appropriate after the vendor number. This is being done in an effort to recognize these businesses and to encourage and promote their use to the greatest extent permitted by law.

When more than one supplier is listed for a particular item, selection should be made, whenever possible, from any of the groups identified above, consistent with agency needs and price considerations.

**Term Contract No. 420B**

<b>Contractor Name / Delivery/Web Site</b>	<b>Address</b>	<b>City, State, Zip</b>	<b>Contact, Phone, Fax</b>
Blankenship Associates (W)	PO Box 30425 980 Trinity Rd.	Raleigh, NC 27622	Caroline McCormac 866-201-1157 919-787-1346 919-783-8874 Fax
5-8 Weeks (Fleetwood Furniture)			
<b>Representatives:</b> <a href="http://www.fleetwoodfurniture.com">www.fleetwoodfurniture.com</a>	Paul Meinders		<a href="mailto:cmccormac@blankenshipassociates.com">cmccormac@blankenshipassociates.com</a> <a href="mailto:pmeinders@blankenshipassociates.com">pmeinders@blankenshipassociates.com</a>
	Jim Fussell		<a href="mailto:jfussell@blankenshipassociates.com">jfussell@blankenshipassociates.com</a>
	Traci Smith		<a href="mailto:tsmith@blankenshipassociates.com">tsmith@blankenshipassociates.com</a>
	Fred Combs		<a href="mailto:fcombs@blankenshipassociates.com">fcombs@blankenshipassociates.com</a>
Corilam Fabricating Company, Inc	PO Box 361 201 Macy Grove Road	Kernersville, NC 27284	Miles G. West <a href="mailto:mwest@corilam.com">mwest@corilam.com</a> 866-267-4526 336-993-3511 336-993-2383 Fax
45 Days <a href="http://www.corilam.com">www.corilam.com</a>	Charles Mack <a href="mailto:cmack@corilam.com">cmack@corilam.com</a>		
<b>Dealers:</b>	Campus Concepts		<a href="mailto:campusconcepts@triadbiz.rr.com">campusconcepts@triadbiz.rr.com</a>
	PO Box 1808 Liberty, NC 27298	336-622-3404 336-622-6028 Fax	
	Bob Cromer		
	Dixie Equipment Co.(W,D)		<a href="mailto:dquipmt@aol.com">dquipmt@aol.com</a>
	PO Box 565 Liberty, NC 27298	888-371-2276 336-622-4202 Fax	
	Donna Gordon		
	Institutional Interiors	800-849-2631	<a href="mailto:ricky@institutionalinteriors.com">ricky@institutionalinteriors.com</a>
	PO Box 5069 Emerald Isle, NC 28594	252-354-5550 Fax	
	Ricky Abrams		
	Institutional Interiors	252-758-2490	<a href="mailto:Seymour1@earthlink.net">Seymour1@earthlink.net</a>
	101 W. 14 <sup>th</sup> St., Suite 12 Greenville, NC 27834	252-758-2726 Fax	
	Scott Seymour		
	Institutional Interiors	336-882-9303	<a href="mailto:Jridge6@triad.rr.com">Jridge6@triad.rr.com</a>
	PO Box 5524 High Point, NC	336-882-1932 Fax	
	Jack Ridge		
	Institutional Interiors	919-524-5550	<a href="mailto:mike@institutionalinteriors.com">mike@institutionalinteriors.com</a>
	2851 Van Huron Drive Raleigh, NC 27615	252-354-5550 Fax	
	Mike Baskett		
	Institutional Interiors	704-779-7772	<a href="mailto:jeffmartin@prodigy.net">jeffmartin@prodigy.net</a>
	3710 Society Court Indian Trail, NC 28079	704-882-8635 Fax	
	Jeff Martin		

**Term Contract No. 420B**

	Interior Systems (W)		<a href="mailto:Mgoudy.isi@wildblue.net">Mgoudy.isi@wildblue.net</a>
	PO Box 529	910-673-0633	
	West End, NC 27376	910-639-3361 Cell	
	Mark Goudy		
	Interior Systems (W)	704-364-7326 Home	<a href="mailto:nancyebagwell@aol.com">nancyebagwell@aol.com</a>
	4914 Sharon View Rd.	704-364-3972 Fax	
	Charlotte, NC 28226	704-906-1617 Cell	
	Nancy Bagwell		
	Interior Systems (W)	252-917-1620	<a href="mailto:pirateal@suddenlink.net">pirateal@suddenlink.net</a>
	419 Honeysuckle Ct.	252-353-9960 Fax	
	Greenville, NC 27834		
	Alan Powell		
	Interior Systems (W)	910-673-1620 Home	<a href="mailto:Asimmons12@nc.rr.com">Asimmons12@nc.rr.com</a>
	PO Box 529	910-690-0945 Cell	
	West End, NC 27376	910-673-1655 Fax	
	Archie Simmons		
	Interior Systems (W)	910-673-0633	<a href="mailto:Erankin.isi@wildblue.net">Erankin.isi@wildblue.net</a>
	PO Box 529	336-707-8632 Cell	
	West End, NC 27376		
	Eddie Rankin		
	Interior Systems (W)	910-673-0633	<a href="mailto:dchriscoe.isi@wildblue.net">dchriscoe.isi@wildblue.net</a>
	PO Box 529	910-690-9888 Cell	
	West End, NC 27376		
	David Chriscoe		
	Interior Systems	252-917-1620 Cell	<a href="mailto:pirateal@suddenlink.net">pirateal@suddenlink.net</a>
	202 Deer Creek Lane	252-353-9960 Fax	
	Greenville NC 27834		
	Alan Powell		
	Interior Systems (W)	910-673-0633	<a href="mailto:Rhalverstadt.isi@wildblue.net">Rhalverstadt.isi@wildblue.net</a>
	PO Box 529	910-690-2177 Cell	
	West End, NC 27376		
	Rick Halverstadt		
	Interior Systems (W)	910-673-0633	<a href="mailto:Jhalverstadt.isi@wildblue.net">Jhalverstadt.isi@wildblue.net</a>
	PO Box 529	910-593-4177 Cell	
	West End, NC 27376		
	Josh Halverstadt		
	Interior Systems	252-917-2624 Cell	<a href="mailto:Jpowellisi@earthlink.net">Jpowellisi@earthlink.net</a>
	202 Deer Creek Lane	252-353-0929 Fax	
	Greenville NC 27834		
	Julie O. Powell		
	Interior Systems (W)	910-673-1620 Home	<a href="mailto:Ssimmons7@nc.rr.com">Ssimmons7@nc.rr.com</a>
	PO Box 529	910-690-1090 Cell	
	West End, NC 27376	910-673-1655 Fax	
	Suzanne Simmons		
	Learning Environments	336-622-4296	<a href="mailto:gkeene@learningenvironmentsinc.com">gkeene@learningenvironmentsinc.com</a>

**Term Contract No. 420B**

	PO Box 1127	336-622-4298 FAX	
	Liberty, NC 27298		
	Greg Keene		
	Perfection Equipment		<a href="mailto:Perfection@schoolfurniture.com">Perfection@schoolfurniture.com</a>
	135 Harold Andrews Rd	800-426-3599	
	Siler City, NC 27344	919-742-4577 FAX	
	Joe Trageser		
Custom Educational Furniture LLC	110 Eastside Drive	PO Box 70	Cindy B. Lubin
21 Days	Black Mountain, NC 28711	Swannanoa, NC 28778	800-255-9189
			828-664-0007
			8800-687-9230 Fax
Web Site:			<a href="mailto:cindy@cefinc.com">cindy@cefinc.com</a>
<a href="http://www.cefinc.com">www.cefinc.com</a>			<a href="mailto:martin@cefinc.com">martin@cefinc.com</a>
			Martin Lubin
The HON Company	200 Oak Street	Muscatine, IA 52761	Michael Paar
			800-553-8230
30-45 Days	Randy Hermann	Government	800-466-8694
Web Site:	<a href="mailto:hermannr@honcompany.com">hermannr@honcompany.com</a>	Customer Service	800-833-3902 Fax
<a href="http://www.hon.com">www.hon.com</a>	800-553-8230		<a href="mailto:hongsateam@honcompany.com">hongsateam@honcompany.com</a>
	563-272-7384 Fax		
<b>Dealers:</b>	Forms & Supply		<a href="mailto:Buddy.Jordan@formsandsupply.com">Buddy.Jordan@formsandsupply.com</a>
	6410 Orr Road	800-532-0335	
	Charlotte, NC 28213	704-598-1982 Fax	
	Buddy Jordan		
	<b>Locations covered:</b>	Lumberton, Wilmington, Greensboro, Morrisville Charlotte	
	MacThrift Office Furniture		<a href="mailto:m.perkins@macthrift.com">m.perkins@macthrift.com</a>
	1418 Avondale	919-956-5585	
	Durham, NC 27701	919-956-7499 Fax	
	Michelle Perkins		
	MacThrift Office Furniture		<a href="mailto:b.murphrey@macthrift.com">b.murphrey@macthrift.com</a>
	1307 S. Memorial Drive	252-353-1103	
	Greenville, NC 27834	252-353-4103 Fax	
	Bryan Murphrey	800-745-8586	
	MacThrift Office Furniture		<a href="mailto:s.casuccio@macthrift.com">s.casuccio@macthrift.com</a>
	800 Clanton Road	704-523-6220	
	Charlotte, NC 28217	704-940-0539 Fax	
	Sherry Casuccio		
	MacThrift Office Furniture		<a href="mailto:k.cockerham@macthrift.com">k.cockerham@macthrift.com</a>
	719 North Regional Rd.	336-274-4661	
	Greensboro, NC 27409	336-274-0185 Fax	
	Kim Cockerham	800-933-6967	
	MacThrift Office Furniture		<a href="mailto:b.crawley@macthrift.com">b.crawley@macthrift.com</a>

**Term Contract No. 420B**

	1323 Capitol Blvd.	919-829-1987	
	Raleigh, NC 27409	919-821-0462 Fax	
	Bill Crawley		
	Office Environments of Asheville	828-299-3300	<a href="mailto:guy@oeasheville.com">guy@oeasheville.com</a>
	1070 Tunnel Road Asheville, NC 28805	828-299-3046 Fax	
	Guy Cothran		
	Perfection Equipment		<a href="mailto:Perfection@schoolfurniture.com">Perfection@schoolfurniture.com</a>
	135 Harold Andrews Rd Siler City, NC 27344	800-426-3599 919-742-4577 FAX	
	Joe Trageser		
	Thrifty Office		
	1023 South Miami Blvd.	919-598-8454 919-598-8062 Fax	Jake Lassiter <a href="mailto:jlassiter@thriftyoffice.com">jlassiter@thriftyoffice.com</a>
	Thrifty Office Furniture	910-392-8589	<a href="mailto:mboyd@thriftyofficefurniture.com">mboyd@thriftyofficefurniture.com</a>
	5101 Dunlea Court Ste 109 Wilmington, NC	910-392-6150 Fax	
	Mark Boyd		
Interior Systems, Inc.(W)	PO Box 529	West End, NC 27376	Mark Goudy
30 Days	6667 Highway 211E		800-422-1577 910-673-0633 910-673-2646 Fax
(CDF)			<a href="mailto:Mgoudy.isi@wildblue.net">Mgoudy.isi@wildblue.net</a> <a href="mailto:dchrisco.isi@ac.net">dchrisco.isi@ac.net</a> <a href="mailto:Rhalverstadt.isi@ac.net">Rhalverstadt.isi@ac.net</a>
<a href="http://www.cdfschoolfurn.com">www.cdfschoolfurn.com</a>	Interior Systems, Inc. (W) 6667 NC Highway 211E	910-673-0633	
	Interior Systems, Inc. (W)		<a href="mailto:pirateal@suddenlink.net">pirateal@suddenlink.net</a>
	202 Deer Creek Greenville, NC 27834	252-917-1620 252-353-9960 Fax	
	Alan Powell		
	Interior Systems, Inc. (W)		<a href="mailto:nancybagwell@aol.com">nancybagwell@aol.com</a>
	4914 Sharon View Drive Charlotte, NC 28226	704-364-7326 704-364-3972 Fax	
	Nancy Bagwell		
Krueger International (KI)	1330 Bellevue Street	Green Bay, WI 54308-8100	Guy Patzke <a href="mailto:Paul.schueller@ki.com">Paul.schueller@ki.com</a>
30 Days			800-454-9796
Web Site:			920-468-2781 Fax
<a href="http://www.ki.com">www.ki.com</a>			
	600 Towne Centre Blvd. Suite 304 Pineville, NC 28134	704-889-3235 800-454-9796 704-889-3238 Fax	<a href="mailto:Jeff.strack@ki.com">Jeff.strack@ki.com</a>
	Jeff Strack		

**Term Contract No. 420B**

<b>Dealer:</b>	Interior Systems, Inc. (W)		<a href="mailto:Mgoudy.isi@ac.net">Mgoudy.isi@ac.net</a>
	PO Box 529	800-422-1577	
	6667 Highway 211E	910-673-0633	
	West End, NC 27376	910-673-2646 Fax	
	Mark Goudy		
Perfection Equipment Co., Inc.	PO Box 483 135 Harold Andrews Rd.	Siler City, NC 27344	Joe Tragesar 800-426-3599
30 Days			919-742-5077
Columbia			919-742-4577 Fax
Allied Plastics			<a href="mailto:joetrag@connectnc.net">joetrag@connectnc.net</a>
<a href="http://www.schoolfurniture.com">www.schoolfurniture.com</a>			
RDS	PO Box 1029	Canton, NC 28716	Rufus Dale
90 Days	188 Main Street		888-737-6764
			828-648-8425
	RDS	919-420-0900	828-648-6199 Fax
	PO Box 31621	919-420-5086 Fax	<a href="mailto:rufus@RSSwebsite.com">rufus@RSSwebsite.com</a>
	Raleigh, NC 27622		
	Cole Stefansky		
	<a href="mailto:fanscsky@aol.com">fanscsky@aol.com</a>		
Royal Seating	1205 Industrial Blvd.	Cameron, TX 76520	Donald Moss
4-6 Weeks		Randy Eilts <a href="mailto:reilts@infinitefurniture.com">reilts@infinitefurniture.com</a>	<a href="mailto:Dmoss@infinitefurniture.com">Dmoss@infinitefurniture.com</a>
			877-437-8880
<a href="http://www.RoyalSeating.com">www.RoyalSeating.com</a>			254-605-5544 Fax
<b>Dealers:</b>	School Specialty	919-796-6440	<a href="mailto:astokes@schoolspecialty.com">astokes@schoolspecialty.com</a>
	3208 Peebles Road	919-217-9828 Fax	
	Raleigh, NC 27616		
	Alicia Stokes		
	School Specialty	919-589-1906	<a href="mailto:skurtzman@schoolspecialty.com">skurtzman@schoolspecialty.com</a>
	100 Paragon	800-775-8314 Fax	
	Mansfield, OH 44903		
	Scott Kurtzman		
Scholar Craft Products	PO Box 170748 #1 Scholar Craft Parkway	Birmingham, AL 35217	Dana Layne 800-875-1922
10-30 Days			205-841-1922
Web Site:			205-841-1992Fax
<a href="http://www.scholarcraft.com">www.scholarcraft.com</a>			<a href="mailto:dana@scholarcraft.com">dana@scholarcraft.com</a>
<b>Dealers:</b>	Brame School Products		<a href="mailto:spsales@bramespecialty.com">spsales@bramespecialty.com</a>
	949 Washington St.	800-533-2041	
	Durham, NC 27701	800-522-0470 FAX	
	Stan Jones, George Boyd		
	Campus Concepts		<a href="mailto:campusconcepts@triadbiz.rr.com">campusconcepts@triadbiz.rr.com</a>
	PO Box 1808	336-622-3404	
	Liberty, NC 27298	336-622-6028 FAX	
	Bob Cromer		

**Term Contract No. 420B**

	Learning Environments		<a href="mailto:rlamar@learningenvironmentsinc.com">rlamar@learningenvironmentsinc.com</a>
	PO Box 1127	336-622-4296	
	Liberty, NC 27298	336-622-4298 FAX	
	Robert Lamar		
	School Specialty, Inc.	919-796-6440	<a href="mailto:astokes@schoolspecialty.com">astokes@schoolspecialty.com</a>
	3208 Peebles Road	919-217-9828 Fax	
	Raleigh, NC 27616		
	Alicia Stokes		
	School Specialty, Inc.	704-853-8968	Jim Pass
	0300 Southampton Circle	704-853-8909 Fax	
	Gastonia, NC 28056		
	Interior Systems	Mark Goudy	<a href="mailto:Mgoudy.isi@wildblue.net">Mgoudy.isi@wildblue.net</a>
	6667 Highway 211 East	David Chriscoe	<a href="mailto:Dchriscoe.isi@wildblue.net">Dchriscoe.isi@wildblue.net</a>
	West End, NC 27376	Rick Halverstadt	<a href="mailto:Rhalverstadt.isi@wildblue.net">Rhalverstadt.isi@wildblue.net</a>
		Eddie Rankin	<a href="mailto:Erankin.isi@wildblue.net">Erankin.isi@wildblue.net</a>
		Josh Halverstadt	<a href="mailto:Jhalverstadt.isi@wildblue.net">Jhalverstadt.isi@wildblue.net</a>
		Suzanne Simmons	<a href="mailto:Ssimmons7@nc.rr.com">Ssimmons7@nc.rr.com</a>
		Archie Simmons	<a href="mailto:Asimmons12@nc.rr.com">Asimmons12@nc.rr.com</a>
	4914 Sharon View Road	Nancy Bagwell	<a href="mailto:Nancyebagwell@aol.com">Nancyebagwell@aol.com</a>
	Charlotte, NC 28226	704-364-7326	
		704-364-3972 Fax	
	202 Deer Creek Lane	Alan Powell	<a href="mailto:pirateal@suddenlink.net">pirateal@suddenlink.net</a>
	Greenville, NC 27834	252-917-1620 Cell	<a href="mailto:jpowellisi@earthlink.net">jpowellisi@earthlink.net</a>
		Julie Powell	
		252-917-2624 Cell	
		252-353-9960 Fax	
	Contrax Furnishings	Christina Berg	<a href="mailto:cberg@contrax.com">cberg@contrax.com</a>
	10409 Oak Pond Circle	800-699-7516	
	Charlotte NC 28277	877-373-0622 Fax	
		803-201-3959 Cell	
Spectrum Industries, Inc.	PO Box 400	Chippewa Falls, WI	Theresa Thompson
10-28Days ARO (Stock Items)	925 First Avenue	54729	715-723-6750
28-56 Custom			800-235-1262 Ext, 2131
			800-335-0473 Fax
<a href="http://www.spectrum.furniture.com">www.spectrum.furniture.com</a>	Representative		<a href="mailto:quotes@spectrumfurniture.com">quotes@spectrumfurniture.com</a>
	Girard Smith	800-235-1262 Ext.	<a href="mailto:gsmith@spectrumfurniture.com">gsmith@spectrumfurniture.com</a>
	604 Sadler Road	2461	
	Towson, MD 28286	800-335-0473 Fax	

**Term Contract No. 420B**

Smith System	1714 E. 14 <sup>th</sup> Street	Plano, TX 75074	Leanne Smith
Manufacturing			800-328-1061
30 Days			972-398-4051 Fax
			Leannes@smithsystem.com
Web Site			Lorrie Skwarek <a href="mailto:Lorrie@smithsystem.com">Lorrie@smithsystem.com</a>
<a href="http://www.smithsystem.com/contract/NorthCarolina">www.smithsystem.com/contract/NorthCarolina</a>			
<b>Dealers:</b>	Brame School Products	800-533-2041	<a href="mailto:spsales@bramespecialty.com">spsales@bramespecialty.com</a>
	949 Washington St.	800-522-0470 Fax	
	Durham, NC 27701		
	Stan Jones, George Boyd		
	Interior Systems	West End, NC	<a href="mailto:Mgoudy.isi@ac.net">Mgoudy.isi@ac.net</a>
	PO Box 529	27376	800-422-1577
	6667 Highway 211E		910-673-0633
	Mark Goudy		910-673-2646 Fax
	Institutional Interiors	252-354-9400	<a href="mailto:sales@institutionalinteriors.com">sales@institutionalinteriors.com</a>
	PO Box 5269	800-849-2631	
	Emerald Isle, NC 28594	252-354-5550 FAX	
	John Bell		
	Perfection Equipment	919-742-5077	<a href="mailto:Perfection@schoolfurniture.com">Perfection@schoolfurniture.com</a>
	135 Harold Andrews Rd	800-426-3599	
	Siler City, NC 27344	919-742-4577 FAX	
	Joe Trageser		
	Campus Concepts		<a href="mailto:campusconcepts@triadbiz.rr.com">campusconcepts@triadbiz.rr.com</a>
	PO Box 1808	336-622-3404	
	Liberty, NC 27298	336-622-6028 FAX	
	Bob Cromer		
	RDS	828-648-8425	<a href="mailto:rufus@rdswebsite.com">rufus@rdswebsite.com</a>
	Po Box 1029	828-648-6199 Fax	
	Canton, NC 28716		
	Rufus Dale		
	Bender-Burkot	800-682-2638	<a href="mailto:fbender@bender-burkot.com">fbender@bender-burkot.com</a>
	PO Box 147	800-717-2277 Fax	
	Pollocksville, NC 28573		
	Frank Bender		
	Blankenship Associates	919-787-1346	<a href="mailto:cmccormac@blankenshipassociates.com">cmccormac@blankenshipassociates.com</a>
	980 Trinity Road	919-783-8874 Fax	
	Raleigh, NC 27622		
	Caroline McCormac		
Virco Inc.	PO Box 5000	Conway, AR 72033	Sam Tyler, Sales Service Mgr.
	Highway 65 South		800-448-4726
10-45 Days			501-329-2901

**Term Contract No. 420B**

<a href="http://www.virco.com">www.virco.com</a>	CUSTOMER SERVICE		<a href="mailto:samtyler@virco.com">samtyler@virco.com</a>
Representatives	FAX PO'S TO:	800-267-7218 Fax	
Eastern NC	Highway 65 South	Conway, AR 72033	Greg S. Cave 800-448-4726 ext 1571 910-285-6190 Office 910-381-0774 Fax <a href="mailto:GregCave@virco.com">GregCave@virco.com</a>
Western NC	Highway 65 South Drive	Conway, AR 72033	Rob Davis 800-448-4726 ext 1575 704-849-7982 Office 704-258-3051 Fax <a href="mailto:RobDavis@virco.com">RobDavis@virco.com</a>

**11.A. Recycle Information**

The following information is a **general summary** of contractor's recycled content. Contact the vendor for more information.

<b>Contractor Name</b>	<b>Summary</b>
Blankenship Associates, Inc.	Packaging 90%, Wood Source recycled or recovered from other Manufacturing processes
Corilam Fabricating Co., Inc.	None, Packaging Recyclable
Custom Educational Furniture	10% Post Consumer, Blanket Wrapped
The HON Company	Packaging 74% Post Consumer Waster, 20% Post Consumer Recycled Content; 35% total Recycled Content
Interior Systems, Inc.	20%, Dispose Normal Recycling Methods, Pkg. contains 50% Recycled, 20% Recycled Post Consumer Waste
Krueger (KI)	Post Consumer recycled content 70% - Total Recycled Content 70%,Packaging 5-12% Post Consumer Waste, Recyclable.
Perfection Equipment Co., Inc.	Up to 30%, Pkg. Recyclable
RDS	
Royal Seating	
Scholar Craft Products	Steel to Scrap Yard, Plastic to Recycle Center, Pkg. 40% Post Consumer Waste
Smith System	
Spectrum	% varies for core material and surfaces. Metal parts 100% recycled. Corrugated cartons 38% post industrial material and 100% recyclable.
Virco Inc.	Materials 100% Recyclable, Recycled content varies: Steel up to 20%, Carton up to 50%; Wood & Plastic made with recycled material.

**12. Warranty**

Bidder guarantees items offered to be free from any and all defects in material, packaging and workmanship and agrees to replace defective items promptly at no charge to the State, for the period specified in the WARRANTY Section of NC Specifications 7110-9, 7110-10, 7110-11, 7110-12 and 7110-13. Such replacement shall include parts, freight, labor, and round-trip travel to the user's site, which will all be the responsibility of the contractor.

**13. Substitutions**

Substitutions are not permitted without prior approval of the Division of Purchase and Contract. Failure of the contractor to comply with this requirement may result in the removal of the contractor from the contract.

**14. Contract Addenda**

**Term Contract No. 420B**

<p><b>SPECIAL NOTE:</b></p>	<p>Term Contract 420B for Metal Classroom Furniture was effective December 1, 2008</p> <p>A total of thirteen (13) vendors are on the contract.</p> <p>Due to the number of vendors and the e-procurement process, it will take a few weeks to fully load the vendors and prices in e-procurement.</p> <p>During this period, agencies are requested to check the Purchase and Contract website for the e-procurement implementation of each vendor or contact the vendor directly for new pricing. As each vendor completes the process they will be listed on P &amp; C's website under the addenda section.</p> <p><b><u>E-PROCUREMENT IMPLEMENTED</u></b> as of 12/23/08 (Prices are correct as listed)</p> <p>Corilam          Custom Educational          Krueger (KI)          Perfection Equipment          RDS          Smith System          Spectrum</p> <p><u>Vendors added to E-Procurement as of April, 2009</u></p> <p>Royal Seating          Blankenship          Interior System (CDF)          Scholarcraft          Royal Seating</p>
<p><b>Addendum 1</b></p>	<p>Option exercised to extend contract for one additional year – until November 30, 2012</p>
<p><b>Addendum 2</b></p>	<p>Scholarcraft – dealer added          Perfection Equipment (Columbia)– New Price List          HON – New Price List          Krueger (KI) – New Price List</p>
<p><b>Addendum 3</b></p>	<p>Change contract administrator: Dorothy Shaw</p>