

Term Contract No. 425C

STATE OF NORTH CAROLINA, DEPARTMENT OF ADMINISTRATION		
DIVISION OF PURCHASE AND CONTRACT		
116 West Jones Street, Raleigh, NC 27603-8002		
Term Contract	425C	Furniture, Bookcases
Effective Dates	December 1, 2008 through May 31, 2012	
Bid Number	801768	
Administrator	Dorothy Shaw	
Phone	(919) 807-4535	
Fax	(919) 807-4510	
E-Mail	dorothy.shaw@doa.nc.gov	
Last Updated	November 30, 2011	

1. General Information

All North Carolina Net Prices are listed under the Item Pricing Information Section in this contract. Agencies are encouraged to obtain catalogs from the authorized dealers before placing orders to view styles and finishes of Bookcases.

Contract awards were made to manufacturers who offer sales and services through their regularly established local dealers located in the strategic trade areas of the State. Dealers may be expected to call on agencies to discuss requirements, consult in selection and make recommendations. Inside delivery is available at prices shown herein. Discounts and net bid prices include all transportation charges prepaid to any North Carolina destination.

Recycling/Sustainability: According to NC General Statute 143-58.2, "IT IS THE POLICY OF THIS STATE TO ENCOURAGE AND PROMOTE THE PURCHASE OF PRODUCTS WITH RECYCLED CONTENT". Listed below is a description of how the recycled content comes into play for Bookcases for some contractors.

Bookcases	Contain 20-25% Post Consumer recycled content.
	Maintenance of surface finish extends life.
	Can be ground into particleboard and reused.
	Sawdust recycled for animal bedding, mulch.
Packaging	Contain minimum 20% recycled materials.
	100% recyclable after use.

2. Scope of Contract

The scope of this contract is limited to Bookcases, Wood, Office, most frequently purchased for State Agencies, Institutions and Public Schools. This contract is intended to cover individual purchases of bookcases and are not required to match office furniture (casegoods such as desks, credenzas, etc.) as purchased from Term Contract #425B Furniture, Desks (Wood), Credenzas, Conference Tables, Etc.

This contract shall cover the State's normal requirements for Bookcases, Wood, Office, for use by all State Agencies, Institutions, Public School Units, and certain Non-State Agencies.

3. Taxes

Prices or Discounts shown herein do not include any North Carolina sales or use taxes.

4. Abnormal Quantities

Any agency requirement that exceeds \$35,000.00 must be forwarded to the Division of Purchase and Contract for processing. The Division, at its sole discretion, may process any such requirement in one of the following ways:

1. Purchase may be authorized at the current level of pricing with the current contract vendor(s)
2. Additional discounts from the current level of pricing may be negotiated with the current contract vendor(s)
3. A separate Invitation for Bids may be issued for the requirement

5. Minimum Orders

There are no minimum order requirements for this contract.

6. Placement of Orders

Orders will be placed throughout the contract period on an as-needed basis for the quantity required at the time, and will be issued directly to the respective AUTHORIZED DEALER. Authorized dealers are required to provide the using agency with all information pertinent to the placement of and payment for orders.

Contract changes, if any, over the life of the contract are implemented by contract addenda released by the Contract Administrator to the contractor. If the contractor is accepting orders and/or delivering through other parties, for example a manufacturer accepting orders and delivering through a dealer network or dealers receiving orders through a network of other dealers, then it is the responsibility of the contractor to apprise such parties of all such contract addenda.

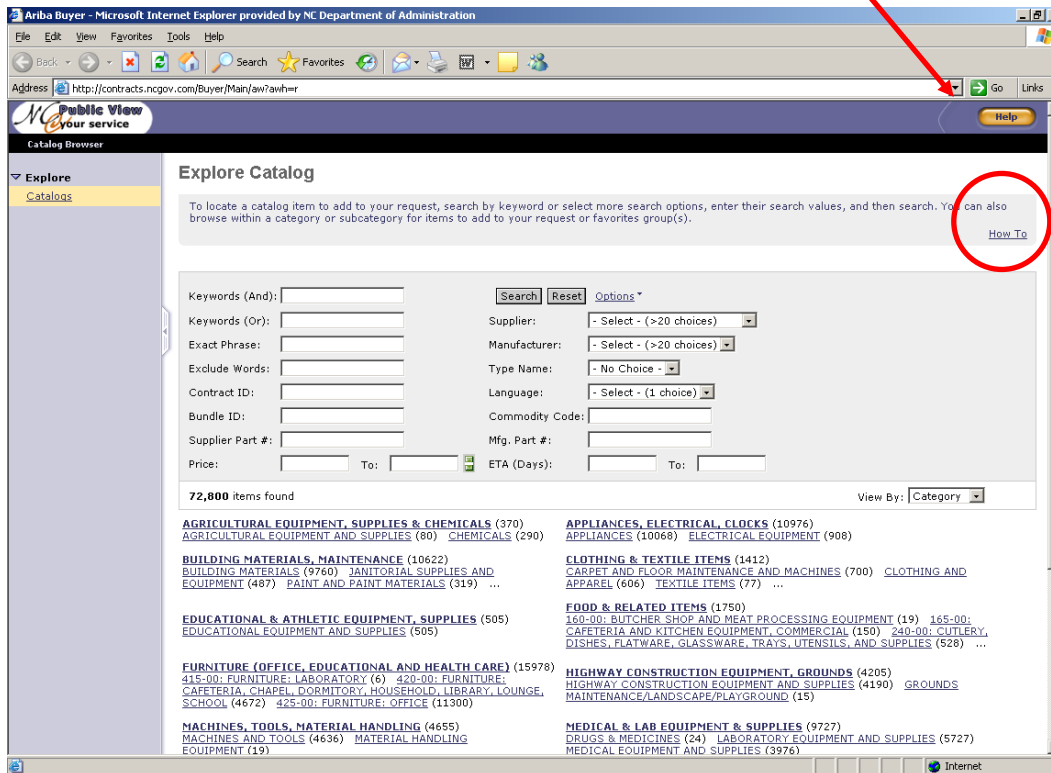
Order Placement Via E-Procurement (Catalog Items)

- a. Click on the following link: [E-Procurement Users](#)
- b. When placing an order in the e-procurement system, the very first thing to do is to go to the catalog tab and select options. After you have selected options, select contract ID. In the contract ID space type in the contract ID number, 425C.
- c. Please make sure the keywords space is blank and the contract ID is typed in the contract ID section.
- d. After selecting the contract ID and to narrow the search to a particular manufacturer select the manufacturer from the drop down
- e. When the item to be ordered has been located complete the requisition and issue the purchase order.

Non E-Procurement Users

The E-Procurement Public View will be the only place for Non E-Procurement Users to view the item/pricing information.

- a. Click on the following link: [E-Procurement Public View](#)
- b. For online assistance regarding item searching; click on the “How to” underlined link located near the upper-right hand corner.



7. Delivery

The contractor(s) will complete delivery within the time frame specified below:

Manufacturer	Delivery	Deduct Dock Delivery
Achieva, Inc.	15 Days	
Corilam Fabricating Company	45 Days	
Dixie Equipment Company	15 Days	\$4.00 Each
Hale Manufacturing	15 Days	
High Point Furniture Industries, Inc.	24 Days	\$10.00 Each
MacThrift Office Furniture (Diversified Furniture & HON)	15 Days	
Perfection Equipment (HON)	15 Days	
Safco Products (Workspace)	15 Days	

Inside Delivery: Inside delivery is available at the net prices shown herein. Bookcases are to be furnished completely assembled, inside delivered and set in place ready for agency use and, removal/disposal of associated debris.

In the event the delivery is not received within the contract delivery period, the contractor may be held in default in accordance with paragraph 1, DEFAULT AND PERFORMANCE BOND in the North Carolina General Contract Terms and Conditions, and the state may procure the articles or services from other sources and hold the contractor responsible for excess cost occasioned thereby.

8. Transportation Charges

All bookcases shall be delivered FOB any North Carolina destination with all transportation charges, inside delivery and set up charges included in contract prices. Inside delivery and set up is to include delivery to agency location, uncrating, assembling (if applicable) and set in place ready for agency use in desired location(s) as determined by agency personnel.

Special Note! All shipments should be inspected for damage immediately upon receipt.

9. Item Pricing Information

Below is a list of the series of completely assembled bookcases authorized for purchase from this contract. It is recommended that you obtain catalogs from the dealers to view the different styles and finishes of bookcases offered. All North Carolina Net Prices for Bookcases are listed below.

Description	Manufacturer	Series Name/Number
Type I Style B, Class 3 Case Design, Traditional Base, ParticleBoard with High or Low Pressure Laminate	Perfection (HON) High Point	105532 Case Design Series Bedford Wyndham
Type II Style A, Class 2 End Panel Design, Recessed Base ParticleBoard Wood Veneer (End Panels)	Dixie Equipment (Norsons) MacThrift (Diversified) Safco International (Workspace)	Excalibur Contemporary Series 7102X Square Edge Workspace Bookcase Series BC- xx-xx and RBC-xx-x
Type II Style A, Class 2H End Panel Design, Recessed Base ParticleBoard Wood Veneer (End Panels)	High Point	Forte CV x48
Type II Style A, Class 3 End Panel Design, Recessed Based ParticleBoard High or Low Pressure Laminate	Achieva High Point MacThrift (Diversified) MacThrift (HON) Corilam	Easy Fit BK-xxxx 2200 Series Vitality Series Series 7800 Laminate 1870 Laminate Series 810 Series
Type II Style B, Class 1 End Panel Design, Traditional Base, Wood	Hale Mfg.	New Yorker 1100 Series
Type II, Style B, Class 2 Particleboard Wood Veneer	Safco International (Workspace)	Workspace Traditional Series BC- xx-x

Explanation:

Type I	Sides, top, bottom and back panel attached to each other as a single unit. Separate base and top box structure attached to base.
Type II	End panels extend to floor with rails attached to them front and back. Rails also provide support for bottom shelf.
Style A	Base recessed approximately 3/4" behind front face of shelving.
Style B	Traditional Base. Base structure flush or extends approximately 3/4" beyond the front face of shelving.
Class 2	Particleboard Wood Veneer
Class 2H	Particleboard Wood Veneer (1" thick (min.) end panels).
Class 3	Particleboard with High or Low Pressure Laminate

All items listed above meet the requirements of NC Qualified Products List No. 7195-7F for Bookcases, Wood, Office, which can be viewed by accessing our home page (www.ncpandc.gov), Term Contract Purchasing and Engineering Section.

Term Contract No. 425C

CONTRACTOR/MANUFACTURER: ACHIEVA, INC.

SERIES MODEL NUMBER	DESCRIPTION	NC NET PRICES
Easy Fit Series	Specify Finish: (1) Walnut (2) Medium Oak, Shelf Count Includes Bottom Shelf	
BK3630	30" Bookcase, 1 Adjustable Shelf, 1 Fixed Shelf, 36"Wx30"Hx12"D	\$94.80
BK 3642	42" Bookcase, 2 Adjustable Shelves, 1 Fixed Shelf, 36"Wx42"Hx12"D	\$114.60
BK3648	48" Bookcase, 2 Adjustable Shelves, 2 Fixed Shelves, 36"Wx48"Hx12"D	\$135.60
BK3660	60" Bookcase, 2 Adjustable Shelves, 2 Fixed Shelves, 36"Wx60"Hx12"D	\$149.40
BK3672	72" Bookcase, 3 Adjustable Shelves, 2 Fixed Shelves, 36"Wx72"Hx12"D	\$169.80
BK3684	84" Bookcase, 4 Adjustable Shelves, 2 Fixed Shelves, 36"Wx84"Hx12"D	\$197.40
BK3612	36" x 12" Shelf Pack, 1 each, 1" Shelf (34-1/2" wide x 11-5/8" deep)	\$27.00

ABOVE PRICES BASED ON ACHIEVA RETAIL PRICE LIST EFFECTIVE JANUARY 1, 2007 LESS 40% DISCOUNT.

CONTRACTOR/MANUFACTURER: CORILAM FABRICATING COMPANY

SERIES MODEL NUMBER	DESCRIPTION	NC NET PRICES
810 Series	Specify Finish: Laminate (Natural Oak, Med. Oak, Maple, Grand Cherry, Light Gray, Grey Nebula, Beige Granite, Ebony Sand, Extended Color	
81023636	36" Bookcase, Laminate w/3mm PVC, 1 Adjustable Shelf, 36"Wx12"Dx36"H	\$177.10
81023648	48" Bookcase, Laminate w/3mm PVC, 2 Adjustable Shelves, 36"W x 12"D x 48"H	\$221.10
81023660	60" Bookcase, Laminate w/3mm PVC, One fixed, 2 Adjustable 1" Shelves, 60"Hx12"Dx36"W	\$245.85
81023672	72" Bookcase, Laminate w/3mm PVC, 3 Adjustable Shelves, 72"Hx12"Dx36"W	\$285.45
81023684	84" Bookcase, Laminate w/3mm PVC, One Fixed, 4 Adjustable Shelves, 84"Hx12"Dx36"W	\$336.05
810AS236	Adjustable Bookcase Shelf, 1" Thickness, 36" L	\$16.50

ABOVE PRICES BASED ON CORILAM FABRICATING COMPANY PRICE LIST 2009 LESS 45% DISCOUNT.

Term Contract No. 425C

CONTRACTOR/MANUFACTURER: DIXIE EQUIPMENT (NORSONS)

SERIES MODEL NUMBER	DESCRIPTION	NC NET PRICES
CONTEMPORARY SERIES	Specify Finish: Mahogany, Walnut, Natural Oak, California Oak, Medium Cherry	
3012-1	30" Contemporary Bookcase, 1 Adjustable Shelf, 30"Hx36"Wx12"D	\$104.50
3612-2	36" Contemporary Bookcase, 2 Adjustable Shelves, 36"Hx36"Wx12"D	\$119.00
4812-3	48" Contemporary Bookcase, 3 Adjustable Shelves, 36"Wx48"Hx12"D	\$143.00
6012-4	60" Contemporary Bookcase, Four Adjustable Shelves 36"Wx60"Hx12"D	\$169.50
7215-5	72" Contemporary Bookcase, Five Adjustable Shelves, 36"Wx72"Hx12"D	\$192.50
8412-6	84" Contemporary Bookcase, Six Adjustable Shelves, 84"H x 36"W x 12"D	\$218.50
EXCALIBUR SERIES	Heavy Duty Capacity Series, Specify Finish: Walnut, Natural Oak, California Oak, Mahogany, Medium Cherry	
EXC30	30" Excalibur Bookcase, 1 Adjustable Shelf, 150 lb. capacity per shelf, 30"Hx36"Wx12"D	\$119.00
EXC36	36" Excalibur Bookcase, 2 Adjustable Shelves, 150 lb. capacity per shelf, 36"Hx36"Wx12"D	\$150.00
EXC48	48" Excalibur Bookcase, 3 Adjustable Shelves, 150 lb. capacity per shelf, 48"Hx36"Wx12"D	\$186.00
EXC60	60" Excalibur Bookcase, 4 Adjustable Shelves, 150 lb. capacity per shelf, 60"Hx36"Wx12"D	\$224.50
EXC72	72" Excalibur Bookcase, 5 Adjustable Shelves, 150 lb. capacity per shelf, 72"Hx36"Wx12"D	\$257.50
EXC84	84" Excalibur Bookcase, 6 Adjustable Shelves, 150 lb. capacity per shelf, 84"Hx36"Wx12"D	\$296.00

ABOVE PRICES BASED ON DIXIE EQUIPMENT (NORSONS) LIST PRICE AND PRODUCT INFORMATION BOOK JANUARY 2009, LESS 50% DISCOUNT.

CONTRACTOR/MANUFACTURER: HALE MFG.

SERIES MODEL NUMBER	DESCRIPTION	NC NET PRICES
1100 New Yorker Series	Specify Finish: Walnut, Med. Oak, Mahogany, Maple and Cherry	
1130	30" Contemporary Bookcases, One Solid Wood , 1 Adjustable Shelf, 30"Hx11-3/4"Dx36"W	\$248.04
1136	36" Contemporary Bookcases, Two Solid Wood Adjustable Shelves, 36"Hx11-3/4"Dx36"W	\$295.36
1148	48" Contemporary Bookcases, Three Solid Wood Adjustable Shelves, 48"Hx11-3/4"Dx36"W	\$367.64
1160	60" Contemporary Bookcases, Four Solid Wood Adjustable Shelves, 60"Hx11-3/4"Dx36"W	\$462.28
1172	72" Contemporary Bookcases, Five Solid Wood Adjustable Shelves, 72"Hx11-3/4"Dx36"W	\$524.68
1184	84" Contemporary Bookcases, Six Solid Wood Adjustable Shelves, 84"Hx12"Dx36"W	\$595.92

ABOVE PRICES ARE BASED ON HALE MFG. PRICE LIST #0508 EFFECTIVE MAY 1, 2008 LESS 48% DISCOUNT, NC = ZONE 2.

Term Contract No. 425C

CONTRACTOR/MANUFACTURER: HIGH POINT FURNITURE INDUSTRIES

SERIES MODEL NUMBER	DESCRIPTION	NC NET PRICES
Forte Series	Color Options: Honey Cherry, Natural Maple	
CV30	30" Contemporary Bookcase, One Adjustable Shelf, 36"Wx14"Dx30"H	\$505.920
CV48	48" Contemporary Bookcase, Two Adjustable Shelves, 36"Wx14"Dx48"H	\$557.28
CV65	65" Contemporary Bookcase, Two Adjustable Shelves, Two Fixed Shelves, 36"Wx14"Dx65"H	\$754.08
SERIES MODEL NUMBER	DESCRIPTION	NC NET PRICES
2200 SERIES	Color Options: Mahogany, Windsor Cherry, Medium Oak, Walnut	
FR-36	36" Contemporary Bookcase, One Adjustable Shelf, 1 Fixed Shelf, 36"W x 17"D x 36"H	\$217.44
FR-48	48" Contemporary Bookcase, Two Adjustable Shelves, 1 Fixed Shelf, 36"W x 17"D x 48"H	\$266.88
FR-65	65" Contemporary Bookcase, Three Adjustable Shelves, 2 Fixed Shelves, 36"W x 17"D x 65"H	\$321.12
FR-652D	65" Two-Door Bookcase, Contemporary, 2 Adjustable Shelves Top, 1 Adj. Shelf Behind Doors, 36"W x 17"D x 65"H	384.96
FR-72	72" Bookcase, Contemporary, 3 Adjustable Shelves Top, Two Fixed Shelves, 36"W x 17"D x 72"H	\$358.08
SERIES MODEL NUMBER	DESCRIPTION	NC NET PRICES
BEDFORD TRADITIONAL SERIES	Color Options: Mahogany, Windsor Cherry	
TR-762D	77" Traditional Bookcase, One Adjustable Shelf, 1 Fixed Shelf, 36"W x 16"D x 77"H, Encl. Storage, Two Adjustable Shelves, One Fixed Shelf	\$604.80
TR-B52	52" Traditional Bookcase, Two Adjustable Shelves, 36"W x 16"D x 52"H	\$379.20
TR-B76	77" Traditional Bookcase, Three Adjustable Shelves, 1 Fixed Shelves, 36"W x 16"D x 77"H	\$519.36
TR-W72	72" Traditional Bookcase, Wall Unit, 4 Adjustable Shelves, 36"W x 16"D x 72"H	\$473.76
TR-W722D	72" Traditional Bookcase, 2-Door Wall Unit, 2 Adj. Shelves Top, 1 Adj. Shelf behind doors, 36"W x 16"D x 72"H	\$571.20
WYNDHAM SERIES	Color Options: Mahogany, Windsor Cherry, Medium Oak	
WY-65	65" Traditional Bookcase, 3 Adjustable Shelves, Two Fixed Shelves, 38"Wx19"Dx65"H,	\$431.04

ABOVE PRICES ARE BASED ON HIGH POINT FURNITURE INDUSTRIES PRICE LIST EFFECTIVE 01.01.11, ZONE 1, LESS 52% DISCOUNT.

Term Contract No. 425C

CONTRACTOR/MANUFACTURER: MACTHRIFT OFFICE FURNITURE (DIVERSIFIED FURNITURE IND.)

SERIES MODEL NUMBER	DESCRIPTION	NC NET PRICES
Square Edge Contemporary Series (Veneer)	Walnut, Mahogany, Cherry	
7101	30" Bookcase, Square Edge, One Adjustable shelf, 36"Wx12"Dx30"H	\$128.05
7102	36" Bookcase, Square Edge, One Adjustable shelf , 36"Wx12"Dx36"H	\$148.20
7103	48" Bookcase, Square Edge, Two Adjustable shelves, 36"Wx12"Dx48"H	\$185.90
7104	60" Bookcase, Square Edge, Three Adjustable shelves, 36"Wx12"Dx60"H	\$224.90
7105	72" Bookcase, Square Edge, Four Adjustable shelves, 36"Wx12"Dx72"H	\$265.85
7106	84" Bookcase, Square Edge, Five Adjustable shelves, 36"Wx12"Dx84"H	\$304.85
SERIES MODEL NUMBER	DESCRIPTION	NC NET PRICES
Square Edge Contemporary Series (Laminate)	Medium Oak, Mahogany, Cherry	
7801	30" Bookcase, Square Edge, One Adjustable shelf, 36"Wx12"Dx30"H	\$85.80
7802	36" Bookcase, Square Edge, Two Adjustable shelves, 36"Wx12"Dx36"H	\$111.80
7803	48" Bookcase, Square Edge, Three Adjustable shelves, 36"Wx12"Dx48"H	\$129.35
7804	60" Bookcase, Square Edge, Four Adjustable shelves, 36"Wx12"Dx60"H	\$154.70
7805	72" Bookcase, Square Edge, Four Adjustable shelves, 36"Wx12"Dx72"H	\$172.25
7806	84" Bookcase, Square Edge, Five Adjustable shelves, 36"Wx12"Dx84"H	\$198.25

ABOVE PRICES BASED ON DIVERSIFIED FURNITURE INDUSTRIES LIST PRICE SHEET EFFECTIVE JANUARY 1, 2008, LESS 35% DISCOUNT.

CONTRACTOR/MANUFACTURER: MACTHRIFT OFFICE FURNITURE (HON)

SERIES MODEL NUMBER	DESCRIPTION	NC NET PRICES
1870 Series Laminate	Medium Oak, Mahogany, Henna Cherry	
1871	30" Bookcase, Square Edge, One Adjustable shelf, 36"Wx12"Dx30"H	\$115.70
1872	36" Bookcase, Square Edge, Two Adjustable shelves, 36"Wx12"Dx36"H	\$128.70
1874	48" Bookcase, Square Edge, Three Adjustable shelves, 36"Wx12"Dx48"H	\$156.00
1875	60" Bookcase, Square Edge, Four Adjustable shelves, 36"Wx12"Dx60"H	\$184.60
1876	72" Bookcase, Square Edge, Four Adjustable shelves, 36"Wx12"Dx72"H	\$212.55
1877	84" Bookcase, Square Edge, Five Adjustable shelves, 36"Wx12"Dx84"H	\$242.45

ABOVE PRICES BASED ON HON 2008 LIST PRICER EFFECTIVE DATE OCTOBER 1, 2008, LESS 35% DISCOUNT.

SERIES MODEL NUMBER	DESCRIPTION	NC NET PRICES
HON Radius Edge, 10500 Series	Maple, Henna Cherry, Medium Oak, Mahogany	
105532	Bookcase, 30", One Adjustable Shelf, 36"W x 30"H x 13"D	\$163.50

Term Contract No. 425C

105533	Bookcase, 43", One Adjustable Shelf, 36"W x 43"H x 13"D	\$211.50
105534	Bookcase, 57", One Adjustable Shelf, 36"W x 57"H x 13"D	\$249.50
105535	Bookcase, 71", One Adjustable Shelf, 36"W x 71"H x 13"D	\$299.50

ABOVE PRICES ARE BASED ON HON 2008 LIST PRICER, EFFECTIVE OCTOBER 1, 2008, LESS 50% DISCOUNT.

CONTRACTOR/MANUFACTURER: PERFECTION EQUIPMENT CO., INC. (HON)

SERIES MODEL NUMBER	DESCRIPTION	NC NET PRICES
10500 Series Laminate Bookcases	Cherry, Mahogany	
105532	Bookcase, 30", 2 Fixed Shelves, 36"Wx30"Hx13"D	\$196.20
105533	Bookcase, 43", 3 Fixed Shelves, 36"Wx43"Hx13"D	\$253.80
105534	Bookcase, 57", 4 Fixed Shelves, 36"Wx57"Hx13"D	\$299.40
105535	Bookcase, 71", 5 Fixed Shelves, 36"Wx71"Hx13"D	\$359.40

ABOVE PRICES ARE BASED ON HON 2008 LIST PRICER, EFFECTIVE OCTOBER 1, 2008, LESS 40% DISCOUNT.

CONTRACTOR/MANUFACTURER: SAFCO PRODUCTS CO. (WORKSPACE)

SERIES MODEL NUMBER	DESCRIPTION	NC NET PRICES
Bookcase Series – Square Edge Veneer		
	Cherry, Mahogany, Walnut, Med Oak, Light Oak	
1501	30" Bookcase, Square Edge, One Adjustable Shelf, 36"Wx30"Hx12"D	\$100.50
1502	36" Bookcase, Square Edge, Two Adjustable Shelves, 36"Wx36"Hx12"D	\$117.00
1503	48" Bookcase, Square Edge, Three Adjustable Shelves, 36"Wx48"Hx12"D	\$142.00
1504	60" Bookcase, Square Edge, Four Adjustable shelves, 36"Wx60"Hx12"D	\$167.00
1505	72" Bookcase, Square Edge, Five Adjustable Shelves, 36"Wx72"Hx12"D	\$197.00
1506	84" Bookcase, Square Edge, Six Adjustable Shelves, 36"Wx84"Hx12"D	\$218.00
1584	Bookcase Traditional Trim Kit, 36", Cherry, Mahogany, Walnut	\$ 25.50
Radius Edge Veneer Bookcase		
	Mahogany, Walnut, Med Oak	
1521	30" Bookcase, One Adjustable Shelf, 36"Wx30"Hx12"D	\$111.50
1522	36" Bookcase, Two Adjustable Shelves, 36"Wx36"Hx12"D	\$131.00
1523	48" Bookcase, Three Adjustable Shelves, 36"Wx48"Hx12"D	\$153.00
1524	60" Bookcase, Four Adjustable Shelves, 36"Wx60"Hx12"D	\$181.00
1525	72" Bookcase, Five Adjustable Shelves, 36"Wx72"Hx12"D	\$198.00
1526	84" Bookcase, Six Adjustable Shelves, 36"Wx84"Hx12"D	\$238.00
Radius Edge - Reinforced		
	Mahogany, Walnut, Med Oak	
1571	30" Bookcase, One Adjustable Shelf, 36"Wx30"Hx12"D	\$119.00
1572	36" Bookcase, Two Adjustable Shelves, 36"Wx36"Hx12"D	\$146.50
1573	48" Bookcase, Three Adjustable Shelves, 36"Wx48"Hx12"D	\$176.50
1574	60" Bookcase, Four Adjustable shelves, 36"Wx60"Hx12"D	\$211.50
1575	72" Bookcase, Five Adjustable Shelves, 36"Wx72"Hx12"D	\$236.00
1576	84" Bookcase, Six Adjustable Shelves, 36"Wx84"Hx12"D	\$283.50
1584	Bookcase Traditional Trim Kit, 36", Cherry, Mahogany, Walnut	\$ 25.50
Square Edge – Reinforced		
	Cherry, Mahogany, Walnut, Med Oak, Light Oak	
1551	30" Bookcase, Square Edge, One Reinforced Adjustable Shelf, 36"Wx30"Hx12"D	\$107.50
1552	36" Bookcase, Square Edge, Two Reinforced Adjustable Shelves, 36"Wx36"Hx12"D	\$132.00

Term Contract No. 425C

1553	48" Bookcase, Square Edge, Three Reinforced Adjustable Shelves, 36"Wx48"Hx12"D	\$164.50
1554	60" Bookcase, Square Edge, Four Reinforced Adjustable shelves, 36"Wx60"Hx12"D	\$198.00
1555	72" Bookcase, Square Edge, Five Reinforced Adjustable Shelves, 36"Wx72"Hx12"D	\$235.00
1556	84" Bookcase, Square Edge, Six Reinforced Adjustable Shelves, 36"Wx84"Hx12"D	\$263.50
Baby Veneer Bookcases - Traditional Series (can be paired with square edge veneer bookcases)		
	Cherry, Mahogany, Walnut, Med Oak	
1511	Baby Bookcase, 6 Shelves, 5 Adjustable, 12"W x 72"H x 12" D	\$105.50
1512	Baby Bookcase, 6 Shelves, 5 Adjustable, 24"W x 72"H x 12" D	\$162.00
1513	Baby Bookcase, 6 Shelves, 5 Adjustable, 30"W x 72"H x 12"D	\$176.00
1514	Baby Bookcase, 7 Shelves, 6 Adjustable, 12"W x 84"H x 12"D	\$116.50
1515	Baby Bookcase, 7 Shelves, 6 Adjustable, 24"W x 84"H x 12"D	\$176.50
1516	Baby Bookcase, 7 Shelves, 6 Adjustable, 30"W x 84"H x 12"D	\$198.00
1581	Baby Bookcase, 12" Traditional Trim Kit, Cherry, Mahogany, Walnut	\$16.50
1582	Baby Bookcase, 24" Traditional Trim Kit, Cherry, Mahogany, Walnut	\$21.50
1583	Baby Bookcase, 30" Traditional Trim Kit, Cherry, Mahogany, Walnut	\$24.50
Baby Bookcase – Reinforced		
	Cherry, Mahogany, Walnut, Med Oak	
1563	Baby Bookcase, Reinforced, 6 Shelves, 5 Adjustable, 30"W x 72"H x 12"D	\$217.50
1566	Baby Bookcase, Reinforced, 7 Shelves, 6 Adjustable, 30"W x 84"H x 12"D	\$247.50

ABOVE PRICES ARE BASED ON SAFCO PRODUCTS SUGGESTED LIST PRICE 09 DATED 1.1.2009, LESS 50% DISCOUNT.

10. Price Lists and Catalogs

The successful contractor (authorized dealer) must furnish catalogs, descriptive literature and the Manufacturer's Suggest Retail Price List to any user upon request. This information should be provided to the ordering agency within seven (7) consecutive days after request of the agency. Failure to comply with these requirements may subject the contractor to removal from the contract.

11. Contractors

All known minority, women and disabled owned businesses, as well as disabled business enterprises and nonprofit work centers for the blind and severely disabled, including dealers, will be identified with "Minority owned" "Woman owned", "Disabled Owned", "DBE" or "BSD" as appropriate after the vendor number. This is being done in an effort to recognize these businesses and to encourage and promote their use to the greatest extent permitted by law.

When more than one supplier is listed for a particular item, selection should be made, whenever possible, from any of the groups identified above, consistent with agency needs and price considerations.

There is, however, a preference statute (G.S. 148-70) for Correction Enterprise products. For information on this preference requirement and a list of products, [click here](#).

Contractor Name/Web Site	Address	City, State, Zip	Contact, Phone, Fax
Achieva, Inc.	197 Funder Drive P.O. Box 729	Mocksville, NC 27028	Karen Frye kfrye@funderamerica.com 800-788-7213 336-751-0504 Fax
Corilam Fabricating Company Inc.	201 Macy Grove Road P.O. Box 361 Charles Mock	Kernersville, NC 27284	Miles West mwest@corilam.com 866-267-4526 336-993-3511

Term Contract No. 425C

	cmock@corilam.com		336-993-2383 Fax
Dixie Equipment Co., Inc.	6918 Kinro Road PO Box 565 Richard Safrit	Liberty, NC 27298	Gary Davis dquipmt@aol.com 888-371-2276
Web Site www.dixieequipmentco.com	dquipmt@aol.com		336-622-4202 336-622-6050 Fax
F. E. Hale Manufacturing	120 Benson Place P.O. Box 186	Herkimer, NY 13340	James Benson jim@halebookcases.com
Web Site www.halesince1907.com	Penny Clark penny@halebookcases.com	C. O. Setzer setzerco@aol.com	800-873-4253 315-894-5046 Fax
	800-873-4253 Ext. 223	336-760-2468	
High Point Furniture	1104 Bedford Street Ruth Laws RuthL@hpfi.com Ext. 2222	High Point, NC 27263 Deborah Allred DeborahA@hpfi.com Ext. 2247	Spencer O'Meara Spencero@hpfi.com 800-447-3462
Web Site www.hpfi.com			336-431-7101 336-434-5280 Fax
MacThrift Office Furniture Web Sites www.macthrift.com	1323 Capital Blvd.	Raleigh, NC 27603 Donna Barkley d.barkley@macthrift.com	Bill Crawley b.crawley@macthrift.com 800-955-2580
(Diversified Furniture Ind.) www.diversifiedfurniture.com (HON) www.HON.com			919-829-1987 919-821-0462 Fax
Perfection Equipment Co., Inc. Web Site www.HON.com	135 Harold Andrews Road	Siler City, NC 27344	Paul J. Trageser, Jr. joetrag@connectnc.net 800-426-3599 919-742-5077 919-742-4577 Fax
Safco Products Company (Workspace)	9300 West Research Center Road Thomas McCartha 803-776-0476 803-776-0476 Fax	New Hope, MN 55428	Terry W. Wilson terrywilson@safcoproducts.com 800-328-3020 763-536-6785 Fax
Web Site: www.safcoproducts.com	tomccartha@aol.com		

Term Contract No. 425C

SEE AUTHORIZED DEALERS LISTED BELOW FOR PLACING ORDERS. IT IS SUGGESTED YOU CONTACT DEALER NEAREST YOUR LOCATION.

Location	Dealer	Phone Fax	Manufacturer(s) Represented
Archdale	Archdale Office Supply 115 Trindale Road – 27263 Charles@archdale.com	336-434-4549 800-835-2309 336-861-6391 Fax	High Point
Arden	Hoyle Office Supplies, Inc. 180 Glenn Bridge Road – 28704 bkirschner@hoyleos.com	800-273-6815 828-681-8797 828-681-5933 Fax	Hale Mfg.
Asheville	Office Environments of Asheville PO Box 1750298 1070 Tunnel Road - 28805 Guy Cothran guy@oeasheville.com David Ide dide@oeasheville.com	828-299-3380 828-299-3046 Fax	Hale Mfg.
Asheville	PBI (Professional Business Interiors, Inc.) 123 Sweeten Creek Road, Suite A – 28803 darenp@pbiasheville.com	800-821-2744 828-277-7001 828-277-7003 Fax	Hale Mfg. High Point
Boone	W.J. Office City PO Box 3529 643H Greenway Rd – 28607 Nathan Chaney wj@wjoffice.com	800-289-5802 828-264-3283 828-264-0972 Fax	Hale Mfg. High Point
Burlington	Professional Business Env. 2355 Hanford Road – 27215 Dave Dickerson	800-962-9163 336-570-2426 Fax	Hale Mfg.
Canton	RDS 188 Main Street – 28716 John@rdswebsite.com John Privette	828-648-6425 828-648-6199 Fax	High Point
Chapel Hill	Triangle Office Equipment P.O. Box 2372 3008 S. Elliott Road – 27514 trey@triangleofficeequipment.com	919-929-4203 919-929-7647 Fax	Hale Mfg. High Point
Charlotte	Brame School Products PO Box 32577 – 28232 Bill Freshwater	800-533-2041 800-522-0470 Fax	Safco (Workspace)
Charlotte	Boise Cascade 12140 Vance Davis Drive – 28269 arlenekierce@omworkspace.com	704-948-2100 704-948-2175 Fax	High Point
Charlotte	Carolina Business Interiors, Inc. 4020 Yancey Road – 28217 Ken Kumpe	704-525-7630 704-527-9361 Fax	High Point
Charlotte	Corporate Express 3125-F Horseshoe Lane – 28208 Karen Edmundson	704-357-3051 704-359-9557 Fax	Hale Mfg.
Charlotte	Forms & Supply (W) PO Box 563953 6410 Orr Road – 28213 Buddy.jordan@formsandsupply.com	704-598-8971 ext. 341 800-635-9968 Fax	Achieva Hale Mfg. High Point Safco (Workspace)

Term Contract No. 425C

Charlotte	Gregory Grier, Inc. 2326 Distribution St. – 28203 Ed Grier	704-375-3375 704-375-1710 Fax	Hale Mfg.
Charlotte	In2Furniture, Inc. (OF USA) 15701 Liberty Hall Place – 28277 Dave.morrow@in2furniture.com	704-752-9655 704-752-8113 Fax	High Point
Charlotte	Interior Systems, Inc. 4914 Sharon View Road nancybagwell@aol.com	704-364-7326 704-364-3972 Fax	Corilam
Charlotte	John Miller and Associates 300 West Thirty-Second – 28206-2212 Brent Miller bwm@jmainteriors.com	704-372-5260 704-374-2022 Fax	Hale Mfg. High Point
Charlotte	MacThrift Office Furniture Waterford Center, 800 Clanton Road, Suite H – 28217 s.casuccio@macthrift.com	800-263-1250 704-523-6220 704-940-0539Fax	Diversified High Point HON
Charlotte	My Office Products 8848 Red Oak Blvd English Oak Suite AA – 28217 DWEST1958@aol.com	877-696-7266 877-696-7329 Fax	High Point
Charlotte	Office Environments 56-1409762 11415 Granite St. – 28273 Barry Bale	704-714-7200 704-714-7400 Fax	Hale Mfg.
Charlotte	OM Workspace 12140 Vance Davis Drive – 28269 Jennifer Kerr jenifer@OMWorkspace.com	704-948-2231 704-948-2175 Fax	High Point
Charlotte	Step Up, Inc. (W) 801-I Atando Avenue – 28206 Arlene Kester	704-331-0588 704-331-0644 Fax	Achieva Hale Mfg.
Charlotte	Stephens Office Systems 300-308 Foster Ave. – 28203 keiko@stephensoffice.com	704-525-7912 Ext. 207 704-525-4815 Fax	High Point
Columbia, SC	School Specialty Furn. & Equipment 104 Olde Springs Road – 29223 Mike.sawyer@schoolspecialty.com	803-788-3003 803-753-9318 Fax	High Point
Dunn	Office Value, Inc. 300 North Wilson Avenue – 28334 Tony West tonw@officevalue.com	910-892-7475 Ext. 227 800-826-6351 910-891-4085 Fax	High Point
Durham	Brame Specialty Company PO Box 271 – 27701 George Boyd – Stan Jones spsales@bramespecialty.com	800-533-2041 919- 682-6034 919-683-9692 Fax	Achieva High Point Safco (Workspace)
Durham	MacThrift Office Furniture 4603 Hillsborough Road – 27705 m.perkins@macthrift.com	800-955-2585 919-956-5585 919-956-7499 Fax	Diversified Hale Mfg. High Point

Term Contract No. 425C

			HON
Durham	Thrifty Office Furniture 1023 S Miami Blvd – 27703 Joel Gillis	919-598-8454 919-598-8062 Fax	Achieva
Emerald Isle	Institutional Interiors, Inc. P.O. Box 5269 – 28594 7601 Emerald Drive – 28594 ricky@institutionalinteriors.com	800-849-2631 252-354-9400 252-354-5550 Fax	Achieva Corilam Hale Mfg. High Point
Fayetteville	Corporate Interiors and Sales, Inc. P.O. Box 35106 1329 Morganton Road – 28305 Corporate.interiors@earthlink.com	910-483-7000 910-483-7006 Fax	Hale Mfg. High Point
Fayetteville	OSI Office Sales, Inc. 109 Broadfoot Avenue– 28303 David Nichols Nick3739@yahoo.com	800-764-3227 910-223-6000 910-223-6001 Fax	Hale Mfg. High Point
Fayetteville	Poole Office Supply, Inc. P.O. Box 58118 – 28305-5615 1031 Robeson Street – 28305 Pos1975@aol.com	800-633-9921 910-483-1367 910-483-4027 Fax	High Point
Fayetteville	Williams Office Equipment P.O. Drawer 129 – 28302-0129 407 Ray Avenue 28302 lamarwilliams@nc.rr.com	910-483-0354 910-486-4077 Fax	Hale Mfg. High Point
Greensboro	Carolina Office Machines 1407 Mill Street – 27408 carolinam@aol.com	336-275-2871 336-275-2465 Fax	High Point
Greensboro	Carswell Business Systems/OFUSA 3408L W. Wendover Ave. – 27407	336-369-0200	Hale Mfg.
Greensboro	Design Central Interiors, Inc. 206 South Elm Street – 27401 Faye Smith bharris@designcentralinteriors.com	336-334-0104 336-334-0172 Fax	Hale Mfg. High Point
Greensboro	Forms & Supply (W) 2606 Phoenix Drive Suite 306 – 27406 Earl.lewis@formsandsupply.com	800-559-2869 336-292-4404 Fax	High Point Safco (Workspace)
Greensboro	MacThrift Office Furniture Company 719 N. Regional Road – 27409 k.cockerham@macthrift.com	800-933-6967 336-274-3661 336-274-0185 Fax	Diversified High Point HON
Greensboro	Office Plan, Inc. 8-M Dundas Circle – 27407 Tracy Nash tracy@officeplaninc.com	336-510-1100 336-510-1108 Fax	High Point
Greensboro	Piedmont Office Suppliers, Inc. P.O. Box 1680 – 27402-1680 3206 Rehobeth Church Rd.- 27406 Christopher.s@piedmont-office.com	800-223-6709 336-856-0100 336-856-1101 Fax	Hale Mfg. High Point
Greenville	Institutional Interiors, Inc. 101 West 14 th Street Suite 210 – 27834	800-871-0713 252-758-2212 252-758-2726 Fax	Corilam High Point

Term Contract No. 425C

	seymour1@earthlink.net		
Greenville	Interior Systems 419 Honeysuckle Court Piratea1@suddenlink.net	252-917-1620 252-353-9960 Fax	Corilam
Greenville	MacThrift Office Furniture 1311 W. Arlington Blvd. – 27834 b.murphrey@macthrift.com	800-745-8586 252-353-1103 252-353-4103 Fax	Diversified High Point HON
Greenville	Taff Office Equipment PO Box 925 569 S Evans Street – 27835 kim@taffco.com	800-682-8233 252-752-2175 252-758-1984 Fax	High Point
Harrisburg	Office Supply Services 2139 Supply Court – 28075-5725 dperkins@ossone.com	704-786-4677 704-786-0440 Fax	High Point
Henderson	Corporate Express 1133 Poplar Creek Rd – 27537	864-242-3600 303-209-4844	Hale Mfg.
Hickory	Bumbarger's, Inc. P.O. Box 1807 – 28603-1807 1425 2 nd St NE – 28601 Eleanor.coleman@bumbargers.com	800-951-6852 828-322-9428 828-322-5574 Fax	High Point
Hickory	Carolina Office Equipment P.O. Box 2145 – 28603-2145 1020 2 nd Ave. NW – 28601 acurtis@coehotmail.com	800-955-0928 828-322-6190 828-327-4148 Fax	High Point
Hickory	Gregory Grier, Inc. 950 Tate Blvd. SE – 28602 PO Box 1072 – 28603	828-324-6180 828-324-7449 Fax	Hale Mfg.
Hickory	W. J. Office City – Hickory 915 Tate Blvd SE, Suite 106 – 28602 nate@wjoffice.com	828-322-3198 828-322-3337 Fax	High Point
High Point	Hughes-Rankin Company P.O. Box 1628 – 27261-1628 2020 Logan Street – 27263 hughesrankin@aol.com	800-799-2363 336-841-2363 336-841-2338 Fax	Hale Mfg. High Point
High Point	Institutional Interiors, Inc. P.O. Box 5524 514 W. Parkway Drive – 27262 jridge@triad.rr.com	336-882-9303 336-882-1932 Fax	Corilam High Point
Indian Trail	Institutional Interiors, Inc. 3710 Society Court jeffmartin@prodigy.net	704-779-7772 704-882-8635 Fax	Corilam
Jamestown	Brannon Business Systems 725C W. Main Street – 27282 Mike Meisky	336-454-4995 336-889-4270 Fax	Hale Mfg.
Jamestown	Interior Systems, Inc. (W) 3107 Peninsula Drive Eddie Rankin	910-673-0633 910-673-2646 Fax	Corilam
Lenoir	Anything Office, Inc.	828-758-0182	High Point

Term Contract No. 425C

	309 Main St. NW – 28645 Michelle Colvard Michelle@anythingofficeinc.com	828-754-3655 Fax	
Liberty	Campus Concepts PO Box 1808 107 West Bowman St. – 27298 campusconcepts@triad.rr.com	336-622-3404 336-622-6028 Fax	Achieva Corilam High Point
Liberty	Dixie Equipment Company (W, D) PO Box 565 6918 Kinro Road – 27298 dquipmt@aol.com	888-371-2276 336-622-4202 336-622-6050 Fax	Achieva Corilam Hale Mfg. High Point Norsons
Liberty	Learning Environments, Inc. P.O. Box 1127 104 West Swannanoa Ave – 27298 gkeene@learningenvironmentsinc.com	336-622-4296 336-622-4298 Fax	Corilam Hale Mfg. High Point
Lincolnton	King's Office Supply 227 East Main Street – 28092 Bo King boking@bellsouth.net	704-735-7415 704-732-6554 Fax	Hale Mfg. High Point
Lumberton	Forms and Supply, Inc. (W) P.O. Box 1562 – 28358 1314 E. 5 th Street – 28359 Ron.brisson@formsandsupply.com	704-598-8971 Ext.341 704-596-5383 Fax	High Point Safco (Workspace)
Lumberton	Shaw Office Supplies P. O. Box 2502 806 N. Pine Street – 28359	800-334-4081 910-739-2906 910-671-4087 Fax	Achieva Hale Mfg.
Matthews	School Specialty Furn. & Equipment 3948 Cameron Creek Drive – 28105 Rob.davis@schoolspecialty.com	704-849-7982 704-849-7983 Fax	High Point
Morrisville	Dynamic Office Services 10320 Globe Road – 27560 cmcallister@dosoffice.com	919-832-7668 919-361-4388 Fax	High Point
Morrisville	FSI Office/Forms & Supply 301 E. Dominion Drive – 27560 Les.crenshaw@formsandsupply.com	877-317-1273 877-540-8286 Fax	High Point Safco (Workspace)
New Bern	Branch's Office Supply 309 Pollock Street – 28560 branchsnb@earthlink.net	252-638-5171 252-638-6881 Fax	High Point
New London	Office Innovations, Inc. 40901 Hearne Rd. – 28127 Lisa Furr officeinnovations@ctc.net	704-985-1969 704-463-0407 Fax	High Point
Raleigh	Alfred Williams Company P.O. Box 591 – 27602 1813 Capital Blvd. – 27604 jbradner@alfredwilliams.com	800-522-8872 919-832-9570 919-832-7626 Fax	High Point
Raleigh	American Data Products	919-510-0099	Hale Mfg.

Term Contract No. 425C

	6916 Baywood Drive – 27613 tyler@americandataproductions.com	919-510-0290	
Raleigh	Corporate Express 4505 Falls of Neuse Rd.Ste. 520 – 27609 Tracy Clifton	919-325-0300	Hale Mfg.
Raleigh	Creative Business Interiors 8720 Fleet Service Drive – 27617 Dale Ramey	919-319-6900 919-319-6913 Fax	Hale Mfg.
Raleigh	FSI Office/Forms & Supply 3125 Gresham Lake Road – 27615 Les.crenshaw@formsandsupply.com	919-841-9048 919-841-5848 Fax	High Point
Raleigh	Institutional Interiors, Inc. P.O. Box 90756 – 27675 mike@institutionalinteriors.com	919-571-9752 919-571-8877 Fax	Corilam
Raleigh	Kennedy Office Supply 4211-A Atlantic Ave. – 27604 ploughridge@kennedyoffice.com	919-878-5400 919-790-9649 Fax	Hale Mfg. High Point
Raleigh	MacThrift Office Furniture 1323 Capital Boulevard – 27603 b.crawley@macthrift.com	919-433-5101 800-955-2580 919-821-0462 Fax	Diversified High Point HON
Raleigh	MyOfficeProducts (formerly GetItQuick and Office Supply Solutions) 6001 Chapel Hill Road Suite 110 – 27607 DWEST1958@aol.com	800-766-6297 919-852-0023 919-852-0930 Fax 800-285-2869 Fax	High Point
Raleigh	Office Express (W) P.O. Box 58817 – 27658 2431-151 Spring Forest Rd – 27615 dms@springmail.com	919-876-6789 919-954-8181 Fax	High Point
Raleigh	Price Modern of Raleigh 1401-113 Sunday Dr. – 27607 Shelia.fallsweichel@pricemodern.com	877-853-3023 919-325-0002 919-829-0103 Fax	Hale Mfg. High Point
Raleigh	Storr Office Environments P.O. Box 90639- 27675-0639 10800 World Trade Blvd – 27617 dbowen@storr.com	919-313-3700 919-313-3701 Fax	Hale Mfg. High Point
Rock Hill, SC	American Pen & Panel 2500-C Ebenezer Road – 29732 dave@americanpenandpanel.com	803-324-0544 803-324-0548 Fax	High Point
Rockingham	Marshall Office Supply PO Box 1055 314 S Lawrence St – 28380 marshall@bellsouth.net	910-895-2366 910-895-3266 Fax	High Point
Rocky Mount	Brame School Products PO Box 1378 – 27802 Anita Hale	800-533-2041 800-522-0470 Fax	Safco (Workspace)
Siler City	Perfection Equipment Company 135 Harold Andrews Road – 27344-0483	800-426-3599 919-742-4577 Fax	Achieva Corilam Hale Mfg.

Term Contract No. 425C

	perfection@schoolfurniture.com		High Point HON
Statesville	Office Furniture Concepts (formerly Carolina Office Systems, Inc.) 730 Salisbury Rd – 28677 Jeff.watt@carolinaos.com www.ofccorp.com	704-818-1670 704-871-1963 Fax	High Point
Statesville	Gregory Grier, Inc. 132 Weston Road – 28625	704-876-3069 704-876-6399 Fax	Hale Mfg.
Warrensville	Pencare Specialty Interiors PO Box 245 – 28693 david@pencarellc.com David Pannel	800-320-2821 828-265-0108 Fax	High Point
West End	Interior Systems, Inc. (W) P.O. Box 529 Highway 211 West – 27376 mgoudy@isi@ac.net asimmons12@nc.rr.com	910-673-0633 800-422-1577 910-673-2646 Fax	Achieva Corilam Hale Mfg. High Point
West End	Interior Systems, Inc. (W) PO Box 695 Asimmons12@nc.rr.com	910-673-1620 910-673-1655 Fax	Corilam Hale Mfg.
Wilkesboro	Office Furniture Concepts (formerly Carolina Office Systems, Inc.) 4389 West US 421 – 28697 Janet Howell www.ofccorp.com	336-973-7008 336-973-7010 Fax	High Point
Wilmington	Brame School Products PO Box 2146 – 28402 George Boyd spsales@bramespecialty.com	800-533-2041 800-522-0470 Fax	Safco (Workspace)
Wilmington	Forms & Supply Wilmington 3022 N. Kerr Ave. – 28405 Ken.brogden@formsandsupply.com	910-762-7842 910-763-3545 Fax	High Point Safco (Workspace)
Wilmington	Indoff 4508 Fountain Drive – 28403 j.brown@indoff.com	910-793-1100 910-793-1199 Fax	High Point
Wilmington	MacThrift Office Furniture 7217 Ogden Business Lane, Unit 115 – 28411 r.robinson@macthrift.com	800-722-8615 910-332-0286 910-332-0287 Fax	High Point
Wilmington	Sioux Industrial Sales 100 Eastwood Rd – 28403 Jim Hardy	800-452-8820 910-382-5947 Fax	Hale Mfg.
Wilson	Carolina Office Products, Inc. P.O. Box 727 – 27894-0727 copi@simflex.com	252-237-0144 252-237-1997 Fax	High Point
Winston-Salem	Contract Business Solutions 1375 N Martin Luther King Jr. Drive PO Box 20547 - 27120	336-724-9966 336-724-6633 Fax	Achieva
Winston-Salem	Contract Office Furnishings, Inc. (M) P.O. Box 876 – 27102 1023 W. 14 th Street – 27105	800-542-6883 336-724-6912 336-722-2704 Fax	High Point

Term Contract No. 425C

	ttrollinger@cofws.com		
Mahwah, NJ	Hertz Furniture 95 McKee Drive – 074300 mleiser@hertzfurniture.com	866-444-3789	High Point

12. Warranty

Bookcases furnished under this contract shall be guaranteed against defects in materials, workmanship, and performance for a minimum of one year. The warranty shall begin on the date of acceptance of the products by the ordering facility. During this warranty period, the contractor shall repair or replace defective material, components, or units at no cost to the State of North Carolina (this shall include round trip travel and freight to user's site). The contractor shall guarantee that the product will be a standard and continuing item in the manufacturer's product line. The basic product shall be identifiable by regular catalog numbers.

13. Substitutions

Substitutions are not permitted without prior approval of the Division of Purchase and Contract. Failure of the contractor to comply with this requirement may result in the removal of the contractor from the contract.

14. Contract Addenda

April 2, 2009 - Corrections/Changes have been made to all Aravo Data Templates in E-Procurement. All information is correct – all vendors have been "loaded".

ADDENDUM	EFFECTIVE DATE	DESCRIPTION
1	May 11, 2010 thru November 23, 2010	Dealers added for various manufacturers, various locations. Changes in contacts names and e-mail addresses.
2	December 1, 2010	Option exercised to extend contract for one additional year – until November 30, 2011
3	November 2011	Contract extended until May 31, 2012 High Point Furn. Ind. – changes, dealer additions
4	November 2011	Change contract administrator: Dorothy Shaw