

Term Contract No. 785B

| | | |
|---|--|---|
| STATE OF NORTH CAROLINA, DEPARTMENT OF ADMINISTRATION | | |
| DIVISION OF PURCHASE AND CONTRACT | | |
| 116 West Jones Street, Raleigh, NC 27603-8002 | | |
| Term Contract | 785B | Paper, Drawing and Construction, Newsprint |
| Effective Dates | May 01, 2009 through April 30, 2012 | |
| Bid Number | 200900155 | |
| Administrator | Debbie Carroll | |
| Phone | (919) 807-4534 | |
| Fax | (919) 807-4510 | |
| E-Mail | debbie.carroll@doa.nc.gov | |
| Last Updated | January 28, 2011 | |

1. General Information

This contract is intended to cover the State's normal requirements of Paper, Drawing and Construction, Newsprint for use by all State Agencies, Departments, Institutions, Public School Units (except those exempted by statute) and certain Non-State Agencies.

2. Scope of Contract

The scope of this contract is limited to Instructional School Paper including Bristol Board, Chipboard/Newsboard, Mount Board, Railroad Board, Tagboard, Chart Tablets, Composition Books, Construction Paper, Writing Paper, Easel Stand, Easel Pads, Sentence Strips/Roll, Flash Cards, Finger Paint Paper, Drawing and Water Color Paper, Note Book Filler, Newsprint, General Purpose Art Paper/Roll, and Kraft Wrapping Paper/Roll.

3. Taxes

Prices or Discounts shown herein do not include any North Carolina sales or use taxes.

4. Abnormal Quantities

Any agency requirement that exceeds \$25,000.00 must be forwarded to the Division of Purchase and Contract for processing. The Division, at its sole discretion, may process any such requirement in one of the following ways:

1. Purchase may be authorized at the current level of pricing with the current contract vendor(s)
2. Additional discounts from the current level of pricing may be negotiated with the current contract vendor(s)
3. A separate Invitation for Bids may be issued for the requirement

5. Minimum Orders

This contract will be for a minimum order of **\$200.00** for any single order. Agencies are authorized to purchase from best available sources on orders less than this minimum order value. This provision shall not be used by an agency to circumvent the intent of the contract. If an agency elects to place an order for less than the minimum order value, then transportation charges will be prepaid and added to the invoice.

6. Placement of Orders

Orders will be placed throughout the contract period on an as-needed basis for the quantity required at the time, and will be issued directly to the respective contractor(s) or their designated suppliers. Contract changes, if any, over the life of the contract are implemented by contract addenda released by the Contract Administrator to the contractor. If the contractor is accepting orders and/or delivering through other parties, for example a manufacturer accepting orders and delivering through a dealer network or dealers receiving orders through a network of other dealers, then it is the responsibility of the contractor to apprise such parties of all such contract addenda.

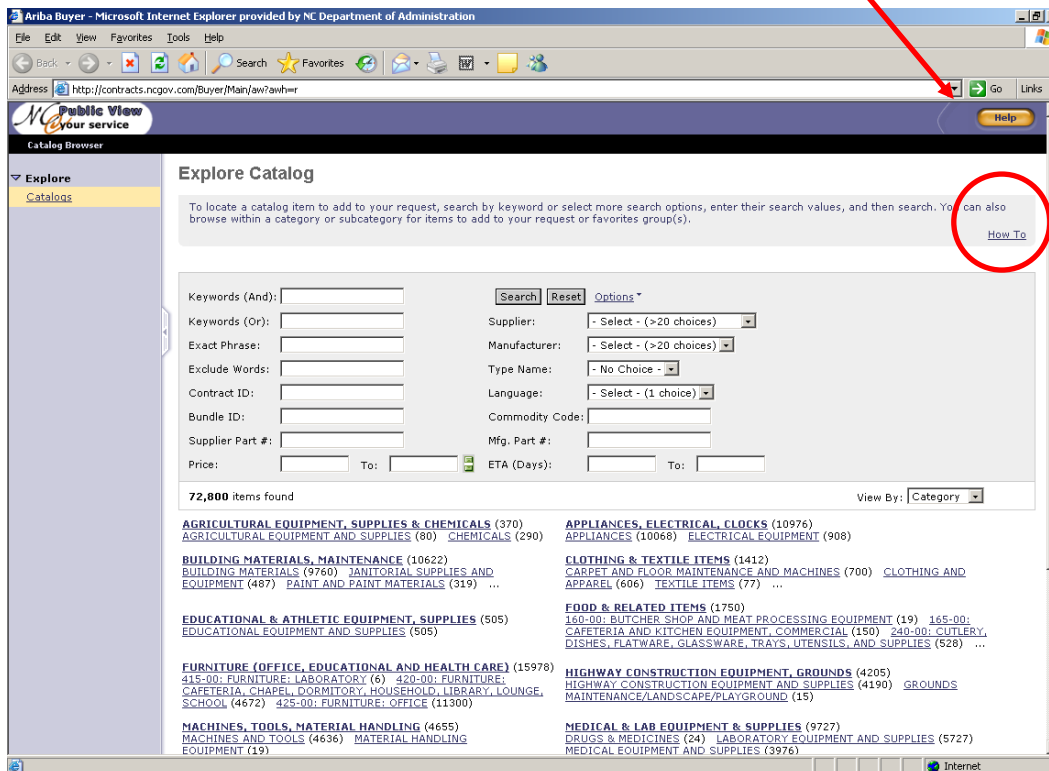
Order Placement Via E-Procurement (Catalog Items)

- Click on the following link: [E-Procurement Users](#)
- When placing an order in the e-procurement system, the very first thing to do is to go to the catalog tab and select options. After you have selected options, select contract ID. In the contract ID space type in the contract ID number, 785B.
- Please make sure the keywords space is blank and the contract ID is typed in the contract ID section.
- After selecting the contract ID and to narrow the search to a particular manufacturer select the manufacturer from the drop down
- When the item to be ordered has been located complete the requisition and issue the purchase order.

Non E-Procurement Users

The E-Procurement Public View will be the only place for Non E-Procurement Users to view the item/pricing information.

- Click on the following link: [E-Procurement Public View](#)
- For online assistance regarding item searching; click on the **“How to”** underlined link located near the upper-right hand corner.



7. Delivery

The contractor(s) will complete delivery within fifteen (15) consecutive calendar days after receipt of purchase order. In the event the delivery is not received within the contract delivery period, the contractor may be held in default in accordance with paragraph 1, DEFAULT AND PERFORMANCE BOND in the North Carolina General Contract Terms and Conditions, and the state may procure the articles or services from other sources and hold the contractor responsible for excess cost occasioned thereby.

8. Transportation Charges

All goods shall be delivered FOB DESTINATION when the "order value" is \$200.00 or more, when shipped to a single destination. Orders to a single destination that total less than this "order value" should be shipped prepaid, with transportation charges added to the invoice as a separate item. Transportation charges invoiced for orders equal to or more than this "order value" may be cause for removal of the contractor from the contact.

NOTE: If the contractor makes partial shipments of an order equal to or more than this "order value" to one destination, all shipments of the order shall be sent FOB DESTINATION with NO additional transportation charges added.

Note! All shipments should be inspected for damage immediately upon receipt.

9. Item Pricing Information

1. Bristol Board

100 sheets per package

| Bristol Board | | | 18 x 24 | | 22 x 28 | |
|---|------------|-----------|----------------------|----------------------|----------------------|----------------------|
| Weight | Contractor | Brand | White | Colors | White | Colors |
| 90 lbs. | Brame | Beveridge | \$12.43 #407-0165 | \$15.60 #407-0230 | \$17.68 #407-0350 | N/B |
| 120 lbs. | Brame | Beveridge | N/B | N/B | \$19.76 #407-0370 | \$25.48 #407-0240 |
| Sold in packages of assorted colors only (Black, Blue, Green, Manila, Orange, Pink, White & Yellow). | | | | | | |
| Recycled Waste Paper 25%, Post Consumer Waste 25% | | | | | | |

2. Chipboard Or News Board

Case Packing - 50 lbs. Per Bundle

| Size | Weight | Sheets/Bundle/Case | Contractor | Stock No. | Price |
|--|--------|-------------------------------|------------|-----------|--------------------|
| 26" x 38" | 35 pt. | Approx. 60 Sheets Per Bundle | Brame | #365-0520 | \$28.65 Per Bundle |
| 8.5" x 11" | 22 pt. | Approx. 1,000 Sheets Per Case | Brame | #365-0100 | \$28.65 Per Case |
| 8.5" x 14" | 22 pt. | Approx. 1,000 Sheets Per Case | Brame | #365-0200 | \$28.65 Per Case |
| Recycled Waste Paper 100%, Post Consumer Waste 100% | | | | | |

3. Mount Board

| Size | Weight | Sheets/Package | Contractor | Stock No. | Price |
|---|--------|-----------------------|------------|------------------|---------------------|
| 22" x 28" | 6 Ply. | 25 Sheets Per Package | Brame | 408-0170 (White) | \$ 6.25 Per Package |
| 22" x 28" | 10 Ply | 25 Sheets Per Package | Brame | 408-0200 (White) | \$22.58 Per Package |
| 22" x 28" | 14 Ply | 25 Sheets Per Package | Brame | 409-0815 (White) | \$28.62 Per Package |
| Recycled Waste Paper 100%, Post Consumer Waste 45% | | | | | |

4. Railroad Board 25 Sheets

Plain Bristol, Basis 22 x 28 - 140 lbs. (4 ply)

| Size | Sheets/Package | Contractor | Brand | Stock No. | Price |
|---|-----------------------|------------|-----------|-----------------------|--------------------|
| 22" x 14" | 25 Sheets Per Package | Brame | Beveridge | 409-0160 (White) | \$4.06 Per Package |
| 22" x 14" | 25 Sheets Per Package | Brame | Beveridge | (Colors listed below) | \$4.94 Per Package |
| Colors Available: Azure Light Blue (409-0136), Black (409-0100), Canary Yellow (409-0130), Dark Blue (409-0110), Emerald Green (409-0132), Ginger Brown (409-0120), Kelly Green (409-0133), Magenta (409-0146), Orange (409-0135), Pearl Pink (409-0134), Red (409-0140), and Royal Blue (409-0150) | | | | | |
| 22" x 28" | 25 Sheets Per Package | Brame | Beveridge | 409-0440 (White) | \$4.87 Per Package |
| 22" x 28" | 25 Sheets Per Package | Brame | Beveridge | (Colors listed below) | \$5.50 Per Package |
| Colors Available: Azure Light Blue (409-0526), Black (409-0360), Buff (409-0445), Canary Yellow (409-0390), Cardinal (409-0450), Coral Pink (409-0425), Dark Blue (409-0430), Emerald Green (409-0395), Ginger Brown (409-0380), Gray (409-0465), Kelly Green (409-0415), Lemon Yellow (409-0396), Magenta (409-0405), Orange (409-0410), Pearl (409-0455), Purple (409-0460), Red (409-0420), and Royal Blue (409-0370) | | | | | |
| Recycled Waste Paper 100%, Post Consumer Waste 45% | | | | | |

Railroad Board 100 Sheets

Plain Bristol, Basis 22 x 28 - 140 lbs. (4 ply)

| Size | Sheets/Package | Contractor | Brand | Stock No. | Price |
|--|------------------------|------------|-----------|-----------------------|---------------------|
| 22" x 14" | 100 Sheets Per Package | Brame | Beveridge | 409-0340 (White) | \$10.41 Per Package |
| 22" x 14" | 100 Sheets Per Package | Brame | Beveridge | (Colors listed below) | \$15.56 Per Package |
| Colors Available: Azure Light Blue (409-0265), Black (409-0260), Canary Yellow (409-0290), Dark Blue (409-0270), Emerald Green (409-0300), Ginger Brown (409-0280), Kelly Green (409-0346), Magenta (409-0345), Orange (409-0310), Pearl Pink (409-0630), Red (409-0320), and Royal Blue (409-0330) | | | | | |
| 22" x 28" | 100 Sheets Per Package | Bender | Pacon | PAC5460 (White) | \$15.54 Per Package |
| 22" x 28" | 100 Sheets Per Package | Brame | Beveridge | (Colors listed below) | \$20.77 Per Package |
| Colors Available: Azure Light Blue (409-5050), Black (409-0530), Buff (409-0545), Canary Yellow (409-0560), Cardinal (409-0555), Coral Pink (409-0620), Dark Blue (409-0540), Emerald Green (409-0570), Ginger Brown (409-0550), Gray (409-0595), Kelly Green (409-0576), Lemon Yellow (409-0575), Magenta (409-0605), Orange (409-0580), Pearl Pink (409-0565), Purple (409-0585), Red (409-0590), and Royal Blue (409-0600) | | | | | |
| Recycled Waste Paper 100%, Post Consumer Waste 45% | | | | | |

Railroad Board (Assorted Colors)

Plain Bristol, Basis 22 x 28, 140 lbs. (4 ply)

| Size | Sheets/Package | Contractor | Brand | Stock No. | Price |
|---|------------------------|------------|-----------|-------------------------------|--------------------|
| 22" x 28" | 100 Sheets Per Package | Brame | Beveridge | 409-0525 (Assorted Colors) | \$22.80 Per Carton |
| Recycled Waste Paper 100%, Post Consumer Waste 45% | | | | | |
| Assorted Colors: Azure Blue, Black, Canary Yellow, Cardinal Red, Dark Blue, Emerald Green, Ginger Brown, Kelly Green, Lemon-Yellow, Magenta, Orange, Pearl Pink, and Royal Blue | | | | | |

5. Tagboard

Basis 24 x 36 - 150 lbs. stock

White

| Size | Sheets/Package | Contractor | Brand | Stock No. | Price |
|--|------------------------|------------|-----------|-----------|---------------------|
| 9" x 12" | 100 Sheets Per Package | Brame | Beveridge | 387-0155 | \$ 2.41 Per Package |
| 12" x 18" | 100 Sheets Per Package | Brame | Beveridge | 387-0160 | \$ 4.82 Per Package |
| 18" x 24" | 100 Sheets Per Package | Brame | Beveridge | 387-0165 | \$ 9.64 Per Package |
| 24" x 36" | 100 Sheets Per Package | Brame | Beveridge | 387-0170 | \$19.28 Per Package |
| Recycled Waste Paper 25%, Post Consumer Waste 25% | | | | | |

Manila

| Size | Sheets/Package | Contractor | Brand | Stock No. | Price |
|--|------------------------|------------|-----------|-----------|---------------------|
| 9 x 12 | 100 Sheets Per Package | Brame | Beveridge | 387-0260 | \$ 2.41 Per Package |
| 12 x 18 | 100 Sheets Per Package | Brame | Beveridge | 387-0270 | \$ 4.82 Per Package |
| 18 x 24 | 100 Sheets Per Package | Brame | Beveridge | 387-0280 | \$ 9.64 Per Package |
| 24 x 36 | 100 Sheets Per Package | Brame | Beveridge | 387-0290 | \$19.28 Per Package |
| Recycled Waste Paper 25%, Post Consumer Waste 25% | | | | | |

6. Chart Tablets

| Description: Chart tablet 1" ruling, long way, both sides. Size 24 x 16 - 24 to a case. | | |
|--|-----------|-------------|
| Contractor/Brand | Stock No. | Price |
| Brame/APC | 481-0200 | \$1.33/Each |
| Recycled Waste Paper 5-25%, Post Consumer Waste 0-25% | | |

| Description: Chart tablet 1 1/2" ruling, long way, both sides. Size 24 x 16 - 24 to a case. | | |
|--|-----------|-------------|
| Contractor/Brand | Stock No. | Price |
| Brame/APC | 481-0230 | \$1.33/Each |
| Recycled Waste Paper 5-25%, Post Consumer Waste 0-25% | | |

6. Chart Tablets (Con'd)

| | | |
|---|------------------|--------------|
| Description: Chart tablet 1 1/2" ruling, short way, both sides. Size 24 x 32 - 12 to a case. | | |
| Contractor/Brand | Stock No. | Price |
| Brame/APC | 481-0220 | \$2.36/Each |
| Recycled Waste Paper 5-25%, Post Consumer Waste 0-25% | | |

| | | |
|---|------------------|--------------|
| Description: Chart tablet 1" ruling, short way, both sides. Size 24 x 32 - 12 to a case. | | |
| Contractor/Brand | Stock No. | Price |
| Brame/APC | 481-0190 | \$2.36/Each |
| Recycled Waste Paper 5-25%, Post Consumer Waste 0-25% | | |

| | | |
|---|------------------|--------------|
| Description: Chart tablet ruled w/red baseline, dotted blue middle line & blue top line, short way, both sides. Size 24 x 32 Manuscript D'Nealian slphabet printed on front and inside cover (12 per carton) | | |
| Contractor/Brand | Stock No. | Price |
| School Specialty/Pacon | 006408-30 | \$6.53/Each |
| Recycled Waste Paper 10%, Post Consumer Waste 0% | | |

| | | |
|--|------------------|--------------|
| Description: Chart tablet, ruled w/red baseline, dotted blue middle line & blue top line, short way, both sides. Size 24 x 32, Cursive D'Nealian alphabet printed on front and inside cover (12 per carton) | | |
| Contractor/Brand | Stock No. | Price |
| School Specialty | 006411-030 | \$6.53/Each |
| Recycled Waste Paper 10%, Post Consumer Waste 0% | | |

| | | |
|---|------------------|--------------|
| Description: Chart Paper, guideline ruled 1 1/2", 20# 100sht/pkg 10/cs. Size 24 x 32 | | |
| Contractor/Brand | Stock No. | Price |
| Brame/APC | 481-0140 | \$9.70/Pkg |
| Recycled Waste Paper 5-25%, Post Consumer Waste 0-25% | | |

| | | |
|---|------------------|--------------|
| Description: Chart Paper, guideline ruled 1", 20# 100sht/pkg 10/cs. Size 24 x 32 | | |
| Contractor/Brand | Stock No. | Price |
| Brame/APC | 481-0130 | \$9.70/Pkg |
| Recycled Waste Paper 5-25%, Post Consumer Waste 0-25% | | |

| | | |
|---|------------------|----------------|
| Description: Chart tablet, ruled both sides with guide line ruling 1-1/2" for manuscript writing using permanent charts. Size 24 x 21.5 (1 per carton) | | |
| Contractor/Brand | Stock No. | Price |
| BramePacon | 481-0170 | \$19.58/Carton |
| Recycled Waste Paper 5-25%, Post Consumer Waste 0-25% | | |

| | | |
|--|------------------|----------------|
| Description: Chart tablet, ruled both sides with guide line ruling 1-1/2" for manuscript writing using permanent charts. Size 24 x 30.(1 per carton) | | |
| Contractor/Brand | Stock No. | Price |
| Brame/Pacon | 481-0180 | \$19.03/Carton |
| Recycled Waste Paper 5-25%, Post Consumer Waste 0-25% | | |

Term Contract No. 785B

7. Composition Books

| Size 10-1/2 x 8", all sulphite white writing paper with blue ruled 3/8", 80 lbs. Coilbound with cover, paper basis 17 x 22", 16 lbs., 5 hole drilled/wide and margin ruled. | | | | | |
|---|----------------|------------------|-------------------|---------------------|--------------|
| Contractor | Brand | Stock No. | Books/Case | Sheets/Pages | Price |
| Brame | Comet | 410-2024 | 72 | 50 sheets | \$8.70/Dozen |
| School Specialty | Roaring Spring | 085267-030 | 24 | 70 Sheets | \$14.16/Case |

| Size 7 x 8-1/2". Paper clean quality white writing blue ruled 3/8", Coilbound with cover, paper basis 17 x 22", 16 lbs. 50 sheets per 100 pages. | | | | | |
|--|--------------|------------------|-------------------|---------------------|--------------|
| Contractor | Brand | Stock No. | Books/Case | Sheets/Pages | Price |
| Brame | Comet | 410-0110 | 144 | 50 sheets | \$8.80/Dozen |

8. Construction Paper Premium

Pacon "Tru-Ray" - For Standard Color, Assorted Colors, and all other colors in the line

Contractor: Bender-Burkot

| | | | |
|--|---|---|---|
| Premium Quality Paper | 50 Sheets Per Package (50 packages/carton) | 50 Sheets Per Package (25 packages/carton) | 50 Sheets Per Package (15 packages/carton) |
| Weight | Size | Size | Size |
| 76 lbs. Basis | 9 x 12" \$1.06 Per Package | 12 x 18" \$2.12 Per Package | 18 x 24" \$4.24 Per Package |
| Recycled Waste Paper 50%, Post Consumer Waste 50% | | | |

| |
|---|
| Colors Offered (Tru-Ray) Sizes: 9" x 12" and 12" x 18" |
|---|

| Color | 9 x 12 Stock # | 12 x 18 Stock# | Color | 9 x 12 Stock# | 12 x 18 Stock # | Color | 9 x 12 Stock # | 12 x 18 Stock # |
|---|-----------------------|-----------------------|---------------|----------------------|------------------------|----------------|-----------------------|------------------------|
| *Assorted | RP3031 | RP3063 | Holiday Green | RP2960 | RP2961 | Salmon | RP3010 | RP3042 |
| *Black | RP3029 | RP3061 | Holiday Red | RP2993 | RP2994 | Scarlet | RP3008 | RP3040 |
| *Blue | RP3022 | RP3054 | Light Green | RP3015 | RP3047 | +Shocking Pink | RP3013 | RP3045 |
| +Bright Assorted | RP2940 | RP2941 | +Light Red | RP3011 | RP3043 | *Sky Blue | RP3016 | RP3048 |
| +Brilliant Lime | RP3423 | RP3425 | Light Yellow | RP3014 | RP3046 | Slate | RP3028 | RP3060 |
| Burgundy | RP2945 | RP2946 | Lilac | RP3018 | RP3050 | Tan | RP3023 | RP3055 |
| Chartreuse | RP3005 | RP3037 | Magenta | RP3000 | RP3032 | +Turquoise | RP3007 | RP3039 |
| *Dark Brown | RP3024 | RP3056 | *Orange | RP3002 | RP3034 | +Violet | RP3009 | RP3041 |
| Dark Green | RP3021 | RP3053 | *Pink | RP3012 | RP3044 | Warm Brown | RP3025 | RP3057 |
| *+Festive Green | RP3006 | RP3038 | +Pumpkin | RP3424 | RP3426 | *White | RP3026 | RP3058 |
| +Festive Red | RP3431 | RP3432 | Purple | RP3019 | RP3051 | *Yellow | RP3004 | RP3036 |
| +Gold | RP2997 | RP2998 | *Red | RP3030 | RP3062 | | | |
| Gray | RP3027 | RP3059 | Royal Blue | RP3017 | RP3049 | | | |
| *Colors in assorted package | | | | | | | | |
| +Colors in Bright Assorted package | | | | | | | | |

8. Construction Paper Premium (Con'd)

Colors Offered (Tru-Ray) Sizes: 18" x 24" – 50 Shts/Pkg. (15 Pkg./Carton) **\$4.24 Per Package**

| Color | 18 x 24 Stock # | Color | 18 x 24 Stock# | Color | 18 x 24 Stock # |
|------------------------------------|-----------------|---------------|----------------|---------------|-----------------|
| *Assorted | RP3095 | Holiday Green | RP2962 | Scarlet | RP3072 |
| *Black | RP3093 | Holiday Red | RP2995 | Shocking Pink | RP3077 |
| *Blue | RP3086 | Light Green | RP3079 | *Sky Blue | RP3080 |
| Brilliant Lime | RP3427 | Light Yellow | RP3078 | Tan | RP3087 |
| Chartreuse | RP3069 | Lilac | RP3082 | Turquoise | RP3071 |
| *Dark Brown | RP3088 | Magenta | RP3064 | Violet | RP3073 |
| Dark Green | RP3085 | *Orange | RP3066 | Warm Brown | RP3089 |
| *Festive Green | RP3070 | *Pink | RP3076 | *White | RP3090 |
| Festive Red | RP3433 | Purple | RP3083 | *Yellow | RP3068 |
| Gold | RP2999 | *Red | RP3094 | | |
| Gray | RP3091 | Royal Blue | RP3081 | | |
| *Colors in assorted package | | | | | |

Colors Offered (Tru-Ray) Sizes: 24" x 36" - 50 Shts/Pkg (10 Pkg/Carton) **\$8.47 Per Package.**

| Color | 24 x 36 Stock # | Color | 24 x 36 Stock# | Color | 24 x 36 Stock # |
|---|-----------------|--------|----------------|--------|-----------------|
| *Assorted | RP3127 | *Black | RP3125 | *White | RP3122 |
| *Colors in assorted package (Black & White Only) | | | | | |

Term Contract No. 785B

8. Construction Paper, Good

Pacon “SunWorks” - For Standard Colors, Assorted Colors, and all other colors in the line

Contractor: Bender-Burkot

| | | | |
|--|---|---|---|
| Good Quality Paper | 50 Sheets Per Package (50 packages/carton) | 50 Sheets Per Package (25 packages/carton) | 50 Sheets Per Package (15 packages/carton) |
| Weight | Size | Size | Size |
| 56 lbs. Basis | 9 x 12" \$.56 Per Package | 12 x 18" \$1.12 Per Package | 18 x 24" \$2.24 Per Package |
| Recycled Waste Paper 0%, Post Consumer Waste 0% | | | |

Colors Offered Pacon “SunWorks” Sizes: 9” x 12” and 12” x 18”

| Color | 9 x 12 Stock # | 12 x 18 Stock# | Color | 9 x 12 Stock# | 12 x 18 Stock # | Color | 9 x 12 Stock # | 12 x 18 Stock # |
|------------------------------------|----------------|----------------|----------------|---------------|-----------------|---------------|----------------|-----------------|
| *Assorted | 13(9) | 13(12) | *Holiday Green | 33(9) | 33(12) | Red-Orange | 6203 | 6207 |
| *Black | 25(9) | 25(12) | *Holiday Red | 88(9) | 88(12) | Salmon | | |
| *Blue | 4(9) | 4(12) | *Hot Pink | 9103 | 9107 | *Scarlet | 28(9) | 28(12) |
| Bright Blue | 7503 | 7507 | Light Brown | 23(9) | 23(12) | *Sky Blue | 5(9) | 5(12) |
| Bright Green | 9603 | 9607 | *Light Green | 56(9) | 56(12) | *Turquoise | 26(9) | 26(12) |
| *Bright White | 8703 | 8707 | *Lilac | 42(9) | 42(12) | *Violet | 3(9) | 3(12) |
| *Brown | 31(9) | 31(12) | *Magenta | 20(9) | 20(12) | *White | 1FS(9) | 1FS(12) |
| *Dark Blue | 7303 | 36(12) | Medium Green | 7903 | 7907 | *Yellow | 14(9) | 14(12) |
| *Dark Brown | 6803 | 6807 | *Orange | 15(9) | 15(12) | Yellow-Green | | |
| Dark Green | 7803 | 7807 | *Pink | 18(9) | 18(12) | Yellow-Orange | 8503 | 8507 |
| *Gray | 9(9) | 9(12) | *Red | 6103 | 6107 | | | |
| *Colors in assorted package | | | | | | | | |

Colors Offered Pacon “SunWorks” Size: 18” x 24” – 50 Shts/Pkg. (15 pkg/carton) \$2.24 Per Package

| Color | 18 x 24 Stock # | Color | 18 x 24 Stock# | Color | 18 x 24 Stock # |
|------------------------------------|-----------------|----------------|----------------|------------|-----------------|
| *Assorted | 6517 | *Gray | 8817 | *Orange | 6617 |
| *Black | 6317 | *Holiday Green | 8017 | *Pink | 7017 |
| *Blue | 7417 | *Holiday Red | 9917 | *Sky Blue | 7617 |
| *Bright White | 8717 | *Hot Pink | 9117 | *Turquoise | 7717 |
| *Brown | 6717 | Light Brown | 6917 | *Violet | 7217 |
| *Dark Blue | 7317 | *Light Green | 8117 | *White | 9217 |
| *Dark Brown | 6817 | *Lilac | 7117 | *Yellow | 8417 |
| *Colors in assorted package | | | | | |

8. Construction Paper, Good (Con'd)

Colors Offered Pacon "SunWorks" Size: 24" x 36" - 50 shts/pkg (10 pkg/carton) \$4.48 Per Package

| Color | 24 x 36 Stock # | Color | 24 x 36 Stock# | Color | 24 x 36 Stock # |
|--|-----------------|--------|----------------|---------------|-----------------|
| *Assorted | 6523 | *Black | 6323 | *Bright White | 8723 |
| *Colors in assorted package (Black and Bright White Only) | | | | | |

9. Writing Paper (10 Reams Per Case)

| Item | Description | Contractor | Stock No. | Price |
|--|---|------------|------------|-------------|
| 9 | Ruled both sides (1 3/4") Long way of sheet. 7/8" midline red baseline. 7/8" descender space, Newsprint Paper | Brame | 481-0400 | \$2.29/Ream |
| 9-1 | Ruled both sides (7/8") Long way of sheet. 7/32" midline, red baseline, 7/16" descender space, Newsprint Paper | School | 085330-030 | \$2.01/Ream |
| 9-2 | Ruled both sides (3/4") descender space, Newsprint Paper | School | 085333-030 | \$2.01/Ream |
| 9-3 | Ruled both sides (1/2") long way of sheet. 1/4" midline, red baseline, 1/4" descender space, Newsprint Paper | School | 085338-030 | \$2.01/Ream |
| 9-4 | Ruled both sides (3/8") short way of sheet. 3/16" midline, red baseline, 3/16" descender space, Newsprint Paper | School | 085341-030 | \$2.01/Ream |
| 9-5 | Ruled both sides (3/8") short way of sheet. 16# sulphite bond paper. (Blue ink only) | Brame | 481-0100 | \$2.69/Ream |
| Brame: Recycled Waste Paper 5%, Post Consumer Waste 0% | | | | |
| School Specialty: Recycled Waste Paper 50-75%, Post Consumer Waste 0% | | | | |

10. Newsprint

| Description: Newsprint, Plain-Unruled, White, Basis 24" x 36", 32#, 500 sheets per ream. (Prices for the sizes 12 x 18, 18 x 24, & 24 x 36 shall be determined by 9 x 12 multiples of 2,4, & 8.) | | | | | | |
|--|------------|--------|-----------|-----------|------------------------------------|--------------|
| Item | Contractor | Brand | Stock No. | Size | Reams/Carton (500 sheets per ream) | Price |
| 10 | Brame | Boston | 479-0100 | 9" x 12" | 10 Reams/Carton | \$ 1.92/Ream |
| 10 | Brame | Boston | 479-0110 | 12" x 18" | 5 Reams/Carton | \$ 3.84/Ream |
| 10 | Brame | Boston | 479-0130 | 18" x 24" | 4 Reams/Carton | \$ 7.68/Ream |
| 10 | Brame | Boston | 479-0140 | 24" x 36" | 2 Reams/Carton | \$15.36/Ream |
| Brame - Recycled Waste Paper 50%, Post Consumer Waste 0% | | | | | | |

| Description: Newsprint, Ruled, White, Basis 24" x 36", 32#, 500 sheets per package. Blue guide line manuscript ruling both sides (items 16G to 16J). | | | | |
|--|------------|--------------|---|-----------------------------------|
| Item | Contractor | Size Sheets | Description | Brand (Stock No.) |
| 10-1 | Brame | 8" x 10 1/2" | Blue ruled both sides, margin 1 3/16" at head then first feint rule. 31 points below an extra light feint rule. Continue alternating the rules at 31 & 32 point to bottom of sheet. Rule long way of sheet. | APC (481-0310) \$2.05/Pkg. |
| 10-2 | Bender | 11 3/4" x 7" | Blue guide line manuscript ruling on the sheets | Pacon (723) \$2.14/Pkg. |

Term Contract No. 785B

10. Newsprint (Con'd)

| Item | Contractor | Size Sheets | Description | Brand (Stock No.) |
|--|-------------------|--------------------|--|---|
| 10-3 | Brame | 9 x 12 | Blue ruled both sides, 1/2" ruled one half page. Margin 6" at head then ruled w/lines 1/2" apart the short way of sheet to the bottom | APC (481-0290) \$2.96/Ream |
| 10-4 | Brame | 18" x 12" | 5 1/2" margin at head of sheet then start solid rule long way of sheet. Then 7/16" below skip rule style then 7/16" below solid rule. Continue same style ruling to the bottom of the sheet | APC (481-0295) \$5.65/Ream |
| 10-5 | Brame | 18" x 12" | 18" x 12" sheet. 5/8" margin at head of sheet then start solid rule long way of sheet. Then 7/16" below skip rule style then 7/16" below solid rule. Continue same style ruling to the bottom of the sheet | APC (481-0308) \$6.50/Ream |
| Brame: Recycled Waste Paper 50%, Post Consumer Waste 0% | | | | |
| Bender: Recycled Waste Paper 50%, Post Consumer Waste 50% | | | | |

11. Note Book Filler

| Description: Note Book Fillers, White, writing paper. Basis 17" x 22" - 16# Standard Ruled w/red marginal line or unruled, standard three hole punch. Sheet size 8 x 10 1/2". 500 sheets per ream, 10 reams/case | | | | |
|---|--------------------|-------------------|------------------------|--------------|
| Item | Description | Contractor | Brand/Stock No. | Price |
| 11 | Note book filler | Brame | APC/481-0250 | \$ 2.14/Ream |
| Recycled Waste Paper 20%, Post Consumer Waste 0% | | | | |

Ecology "Green"

| Description: Note Book Fillers, White, writing paper, acid free, process chlorine free, 80-83 brightness. Basis 17" x 22", 15#, 5 hole punched, | | | | |
|--|--|-------------------|------------------------|----------------|
| Item | Description | Contractor | Brand/Stock No. | Price |
| 11-1 | Note book filler, 8.5" x 11", 3/8" (Wide) ruled with a red margin, 500 sheets/ream, 10 reams/case | Bender-Burkot | Pacon/2416 | \$ 4.62/Ream |
| 11-2 | Note book filler, 8.5" x 11", 9/32", (College) ruled with a red margin, 150 sheets/package, 24 packages/case | Brame | Pacon/481-3202 | \$2.17/Package |
| 11-3 | Note book filler, 8.5" x 10.5", 3/8" (Wide) ruled with a red margin. 150 sheets/package, 24 packages/case | Brame | Pacon/481-3203 | \$2.04/Package |
| Recycled Waste Paper 100%, Post Consumer Waste 40% | | | | |

Term Contract No. 785B

12. Sentence Rolls/Strips

| Item | Description | Contractor | Stock No. | Price |
|--|--|-------------------|------------------|--------------|
| 12 | Sentence roll, white, 3" x 200' | School | 084306-030 | \$3.21/Each |
| 12-1 | Sentence roll, manila, 3" x 200' | School | 084307-030 | \$3.21/Each |
| 12-2 | Sentence strips, manila, 3" x 24", lined, 100 per package | Brame | 481-0540 | \$1.15/Pkg |
| 12-3 | Sentence strips, blue, 3" x 24", lined, 100 per package | Brame | 481-0510 | \$1.69/Pkg |
| 12-4 | Sentence strips, red, 3" x 24" 100 per package lined | Brame | 481-0520 | \$1.69/Pkg |
| 12-5 | Sentence strips, white, 3" x 24", lined, 100 per package | Brame | 481-0500 | \$1.15/Pkg |
| 12-6 | Sentence strips, manila, 3" x 24", plain, no rule, 100 sheets/pkg. | Brame | 481-0560 | \$1.55Pkg |
| 12-7 | Sentence strips, manila, 4" x 24" plain, no rule, 100 sheets/pkg. | Brame | 481-0570 | \$2.56/Pkg |
| Brame - Recycled Waste Paper 25%, Post Consumer Waste 25% | | | | |

13. Flash Cards

| Item | Description | Contractor/Brand | Stock No. | Price |
|-------------|--|-------------------------|------------------|--------------|
| 13 | Practice Flash Cards, Plain, size 2" x 3" (1000 cards) | School Specialty/Pacon | 006489-030 | \$3.76/Box |
| 13-1 | Practice Flash Cards, Plain, size 3" x 9" (250 cards) | School Specialty/Pacon | 006492-030 | \$3.76/Box |

14. Finger Paint Paper

| Description: Finger Paint paper - Size 16" x 22", White, 100 sheets per pkg., 12 packs/case | | | | |
|--|-------------------------|--------------------|------------------|--------------|
| Item | Contractor/Brand | Description | Stock No. | Price |
| 14 | Brame/Beveridge | Finger Paint Paper | 468-0380 | \$2.52/Pkg |
| Recycled Waste Paper 25%, Post Consumer Waste 0% | | | | |

15. Drawing and Water Color Paper

| Item | Description | Contractor | 9 x 12 | 12 x 18 | 18 x 24 |
|--|--|------------|---|---|---|
| 15 | 60 lb. White - 100 sheets per package | Brame | \$1.28/Package Stock No. 478-0180 | \$2.56/Package Stock No. 478-0220 | \$5.12/Package Stock No. 478-0260 |
| 15-1 | 60 lb. White - 500 sheets per ream | Brame | \$5.09/Ream Stock No. 478-0190 | \$10.18/Ream Stock No. 478-0230 | \$20.36/Ream Stock No. 478-0270 |
| 15-2 | 70 lb. White - 100 sheets per package | Brame | \$1.56/Package Stock No. 478-0340 | \$3.12/Package Stock No. 478-0360 | \$6.24/Package Stock No. 478-0380 |
| 15-3 | 70 lb. White - 500 sheets per ream | Brame | \$5.71/Ream Stock No. 478-0350 | \$11.42/Ream Stock No. 478-0370 | \$22.84/Ream Stock No. 478-0390 |
| 15-4 | 80 lb. White - 100 sheets per package | Brame | \$1.56/Package Stock No. 478-0400 | \$3.12/Package Stock No. 478-0420 | \$6.24/Package Stock No. 478-0440 |
| 15-5 | 80 lb. White - 500 sheets per ream | Brame | \$6.45/Ream Stock No. 478-0410 | \$12.90/Ream Stock No. 478-0430 | \$25.80/Ream Stock No. 478-0450 |
| 15-6 | 50 lb. Cream Manila 100 sheets per package | Brame | \$.90/Package Stock No. 478-0100 | \$1.80/Package Stock No. 478-0120 | \$3.60/Package Stock No. 478-0140 |
| 15-7 | 50 lb. Cream Manila - 500 sheets per ream | Brame | \$3.78/Ream Stock No. 478-0110 | \$7.56/Ream Stock No. 478-0130 | \$15.12/Ream Stock No. 478-0150 |
| 15-8 | 60 lb. Cream Manila - 100 sheets per package | Brame | \$.98/Package Stock No. 478-0160 | \$1.96/Package Stock No. 478-0200 | \$3.92/Package Stock No. 478-0240 |
| 15-9 | 60 lb. Cream Manila - 500 sheets per ream | Brame | \$4.32/Ream Stock No. 478-0170 | \$8.64/Ream Stock No. 478-0210 | \$17.28/Ream Stock No. 478-0250 |
| 15-10 | 64 lb. Cream Manila - 100 sheets per package | Brame | \$1.22/Package Stock No. 478-0280 | \$2.44/Package Stock No. 478-0300 | \$4.88/Package Stock No. 478-0320 |
| 15-11 | 64 lb. Cream Manila - 500 sheets per ream | Brame | \$4.63/Ream Stock No. 478-0290 | \$9.26/Ream Stock No. 478-0310 | \$18.52/Ream Stock No. 478-0330 |
| Recycled Waste Paper 5%, Post Consumer Waste 0% | | | | | |

Ecology "Green"

| Description: Drawing Paper, Basis 25" x 38", 60 lb., acid free, process chlorine free, 90 brightness. | | | | | |
|--|--|---------------|-----------------|--------------|--|
| Item | Description | Contractor | Brand/Stock No. | Price | |
| 15-12 | White, 60", 9" x 12", 500 sheets/ream, 4 reams/case | Brame | Pacon/478-4719 | \$ 5.65/Ream | |
| 15-13 | White, 60", 12" x 18", 500 sheets/ream, 4 reams/case | Bender-Burkot | Pacon/PAC4722 | \$11.07/Ream | |
| 15-14 | White, 60", 18" x 24", 500 sheets/ream, 1 ream/case | Bender-Burkot | Pacon/PAC4728 | \$24.67/Ream | |
| Recycled Waste Paper 100%, Post Consumer Waste 40% | | | | | |

16. General Purpose Art Paper

| Item | Description | Colors (Stock #) | Contractor | Brand | Rolls Per Case | Price |
|---|-------------|---|------------------|-------|----------------|--------------|
| 16 | 24" x 100' | Black (#480-1080), Brite Blue (#480-1055), Brown (#480-0990), Canary (#480-1010), Dark Blue (#480-1060), Emerald Green (#480-1040), Flame Red (#480-1000), Light Green (#480-1030), Orange (#480-1020), Pink (#480-1070), Sky Blue (#480-1050), Violet (#480-1090) and White (#480-0986) | Brame | APC | 6 rolls | \$11.49/Roll |
| 16-1 | 36" x 100' | Black (#353012-030), Brite Blue (#082283-030), Brite Green (#082284-030), Brown (#006507-030), Canary Yellow (#352994-030), Dark Blue (#214989-030), Emerald Green (#3530000-030), Flame Red (#082286-030), Lite Green (#082284-030), Orange (#006516-030), Pink (#353009-030), Purple (#082292-030), Scarlet (#352991-030), Sky Blue (#076581-030), Turquoise (#353003-030), and White (#214986-030) | School Specialty | Pacon | 6 rolls | \$10.37/Roll |
| 16-2 | 48" x 200' | White (480-2160) | Brame | APC | 1 roll | \$12.59/Roll |
| 16-2 | 48" x 200' | Black (#480-2105), Bright Blue (#480-2100), Blue (#480-2110), Brown (#480-2115), Canary (#480-2165), Flame Red (#480-2120), Green (#480-2125), Light Blue (#480-2130), Light Green (#480-2135), Orange (#480-2140), Pink (#480-2145), Purple (#480-2150), and Red (#480-2155) | Brame | APC | 1 roll | \$16.85/Roll |
| Brame - Recycled Waste Paper 5%, Post Consumer Waste 0% | | | | | | |
| School Specialty: Recycled Waste Paper 10%, Post Consumer Waste 0% | | | | | | |

17. Wrapping Paper

Brown Kraft

| Description: Wrapping Paper, Rolls 8-1/2" Diameter, Brown Kraft. | | | | |
|---|--------|------------|--------------------|--------------|
| Widths | Weigh | Contractor | Brand/Stock No. | Price |
| 24" | 30 Lb. | Brame | Beveridge/119-0350 | \$19.85/Roll |
| 36" | 30 Lb. | Brame | Beveridge/119-0450 | \$27.48/Roll |
| 18" | 40 Lb. | Brame | Beveridge/119-1000 | \$14.90/Roll |
| 24" | 40 Lb. | Brame | Beveridge/119-1050 | \$16.90/Roll |
| 36" | 40 Lb. | Brame | Beveridge/119-1150 | \$22.85/Roll |
| 24" | 50 Lb. | Brame | Beveridge/119-1401 | \$18.50/Roll |
| 36" | 50 Lb. | Brame | Beveridge/119-1550 | \$24.38/Roll |
| Recycled Waste Paper 20%, Post Consumer Waste 0% | | | | |

White

| Description: Wrapping Paper, Rolls 8-1/2" Diameter, White | | | | |
|--|--------|------------|--------------------|--------------|
| Widths | Weigh | Contractor | Brand/Stock No. | Price |
| 18" | 40 Lb. | Bender | Pacon/5618 | \$19.16/Roll |
| 24" | 40 Lb. | Brame | Beveridge/115-6000 | \$22.50/Roll |
| 36" | 40 Lb. | Bender | Pacon/5636 | \$34.77/Roll |
| 24" | 50 Lb. | Bender | Pacon/5924 | \$36.96/Roll |
| 36" | 50 Lb. | Bender | Pacon/5936 | \$41.06/Roll |
| Brame – Recycled Waste Paper 20%, Post Consumer Waste 0% | | | | |

18. Easel Pads

| Description: The flip charts shall have a paper stock minimum of 15# white bond or 40# offset (no newsprint). Pads are of the type to fit all standard easels. Size 27" c 34", w/50 sheets per pad. Each sheet perforated for tear off approx. 1" from top | | | | | |
|---|-------------|------------------|---------------|------------|------------|
| Item | Description | Contractor | Pads Per Case | Stock No. | Price |
| 18 | Ruled | School Specialty | 4 | 085345-030 | \$5.16/Pad |
| 18-1 | Unruled | School Specialty | 4 | 085343-030 | \$5.16/Pad |
| Recycled Waste Paper 10%, Post Consumer Waste 0% | | | | | |

19. Easel Stand

| Description: 4 leg Easel Pad Stand with permanently attached chalkboard and a flip chart bar attached at the top of the board. Telescoping legs with snap action release. 36"H x 27"W | | |
|--|-----------------|---------------|
| Contractor | Brand/Stock No. | Price |
| Brame | Marsh/429-1521 | \$120.45/Each |

10. **Price Lists and Catalogs**

The successful contractor must furnish descriptive literature to any agency within seven (7) consecutive days after request of the agency. Failure to comply with these requirements may subject the contractor to removal from the contract.

11. Contractors

All known minority, women and disabled owned businesses, as well as disabled business enterprises and nonprofit work centers for the blind and severely disabled, including dealers, will be identified with “Minority owned” “Woman owned”, “Disabled Owned”, “DBE” or “BSD” as appropriate after the vendor number. This is being done in an effort to recognize these businesses and to encourage and promote their use to the greatest extent permitted by law.

When more than one supplier is listed for a particular item, selection should be made, whenever possible, from any of the groups identified above, consistent with agency needs and price considerations.

| Contractor Name | Address | City, State, Zip | Contact, Phone, Fax, E-Mail |
|--|---------------------|-------------------------|--|
| Brame School Products | P.O. Box 271 | Durham, NC 27702 | Jan Moore 800-533-2041 919-682-6034 Fax spsales@bramespecialty.com |
| Bender-Burkot East Coast School Supply Corporation | P.O. Box 147 | Pollocksville, NC 28573 | Frank Bender 800-682-2638 800-717-2277 Fax order@bender-burkot.com |
| School Specialty | 100 Paragon Parkway | Mansfield, OH 44903 | Customer Service 888-388-3224 419-589-1522 Fax bidnotice@schoolspecialty.com |

12. Warranty

The manufacturer’s standard warranty shall apply. Contractor guarantees items offered to be free from any and all defects in material, packaging, and workmanship and agrees to replace defective items promptly at no charge to the State.

13. Substitutions

Substitutions are not permitted without prior approval of the Division of Purchase and Contract. Failure of the contractor to comply with this requirement may result in the removal of the contractor from the contract.

14. Contract Addenda

| Addendum # | Effective Date | Description |
|-------------------|-----------------------|---|
| 1 | August 6, 2010 | Price increase for Brame School Products for the following items: 1. Bristol Board, 2. Chipboard or News Board, 3. Mount Board, 4. Railroad Board 25 Sheets, 100 Sheets, and Assorted Colors 5. Tagboard and Manila, 10. Newsprint (ALL Unruled), 12. Sentence Rolls/Strips (481-0560 and 481-0570 ONLY), 14. Finger Paint Paper and 15. Drawing and Water Color Paper (NOT Ecology “Green”) |

Term Contract No. 785B

| | | |
|----------|-------------------------|---|
| <p>2</p> | <p>January 28, 2011</p> | <p>Price increase for Bender-Burkot for the following items: 4. Railroad Board,-100 sheets, 8. Construction Paper-"Tru-Ray", 10. Newsprint Ecology "Green" (Item 10-2), 11. Notebook Filler (Item 11-1), 15. Drawing and Water Color Paper Ecology "Green" (Items 15-3 & 15-4) and 17. Wrapping Paper, White (40 lb. 18" & 36", 50 lb. 24" & 36")</p> |
|----------|-------------------------|---|